

Collision Analysis



From: 12/1/2009 **Through:** 12/31/2009

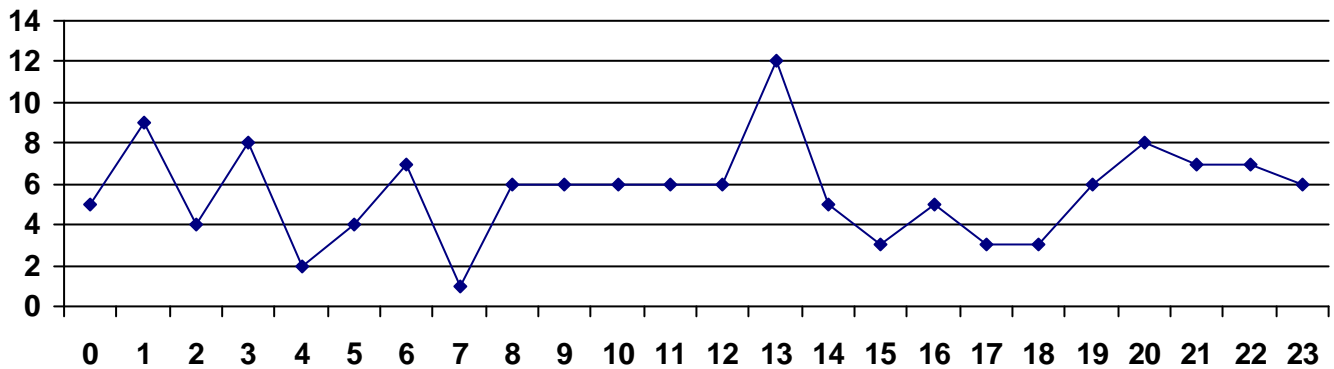
Number of Collisions 135 **Number of Vehicles** 202

Number of Occupants 277 **Number of Pedestrians** 1

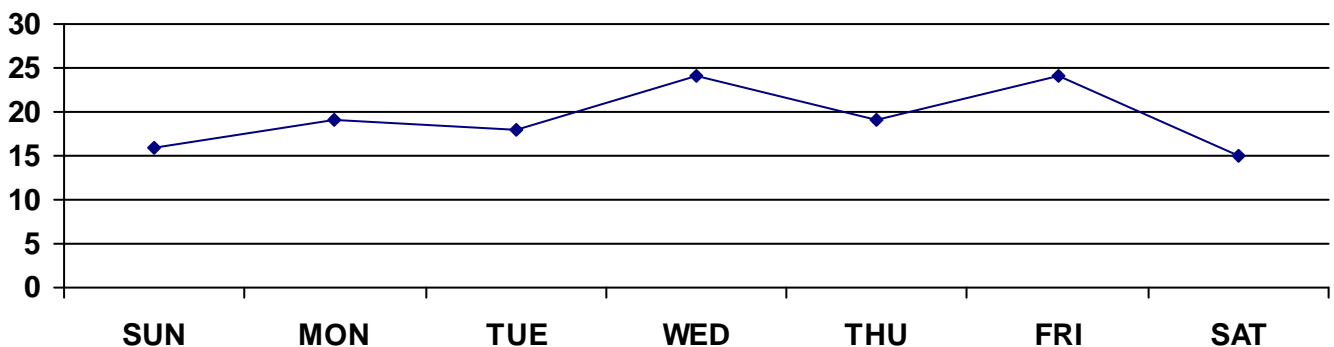
Injury Severity

INCAPACITATING INJURY	4
NON INCAPACITATING	8
POSSIBLE INJURY	15
NOT INJURED	244
UNKNOWN OR INJURY FIELD LEFT BLANK	15

Hour of Day Accident Occurred



Day of Week Accident Occurred



This report is generated from data as entered into the accident module of the I-Leads reporting system. The data has not been audited for accuracy.

Wednesday, January 06, 2010

Page 1 of (

Areas Where Accidents Occurred

EL PASO	56	41.48%
EL PASO COUNTY	22	16.30%
CANUTILLO	18	13.33%
FABENS	12	8.89%
HORIZON CITY	8	5.93%
SAN ELIZARIO	7	5.19%
CLINT	5	3.70%
TORNILLO	3	2.22%
VINTON	2	1.48%
MUNICIPALITY NOT REPORTED	2	1.48%

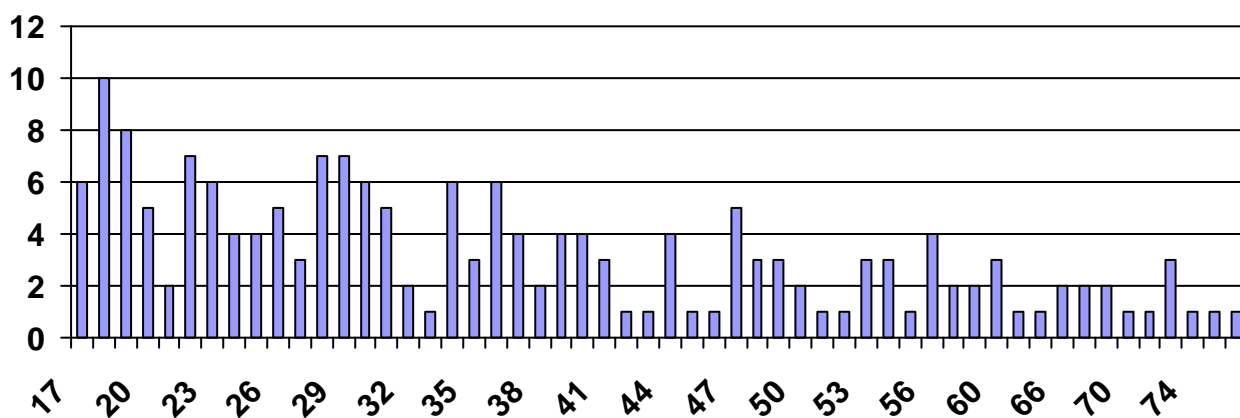
Roadways with Most Accidents

MONTANA AV	10
HORIZON BL	7
EASTLAKE BL	6
GATEWAY EAST BL	4
LOOP 375 SOUTH	3
DONIPHAN DR	3
TALBOT AV	3

Top Contributing Factors to Accidents

FAILED TO CONTROL SPEED	37	27.41%
DRIVER INATTENTION	31	22.96%
FAULTY EVASIVE ACTION	10	7.41%
FOLLOWING TO CLOSELY	9	6.67%
FAILED TO DRIVE IN SINGLE LANE	6	4.44%
HAD BEEN DRINKING	6	4.44%

Age of Drivers Involved in Accidents



This report is generated from data as entered into the accident module of the I-Leads reporting system. The data has not been audited for accuracy.

Drivers in Accidents Held Valid License

YES	171
NO	20

Type of Restraint Used

BOOSTER SEAT	1
CHILD SEAT, FACING FORWARD	5
CHILD SEAT, FACING REARWARD	1
LAP BELT ONLY	1
NONE	3
SHOULDER & LAP BELT	246
SHOULDER BELT ONLY	1
UNKNOWN	11

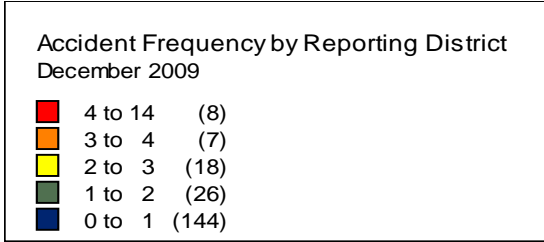
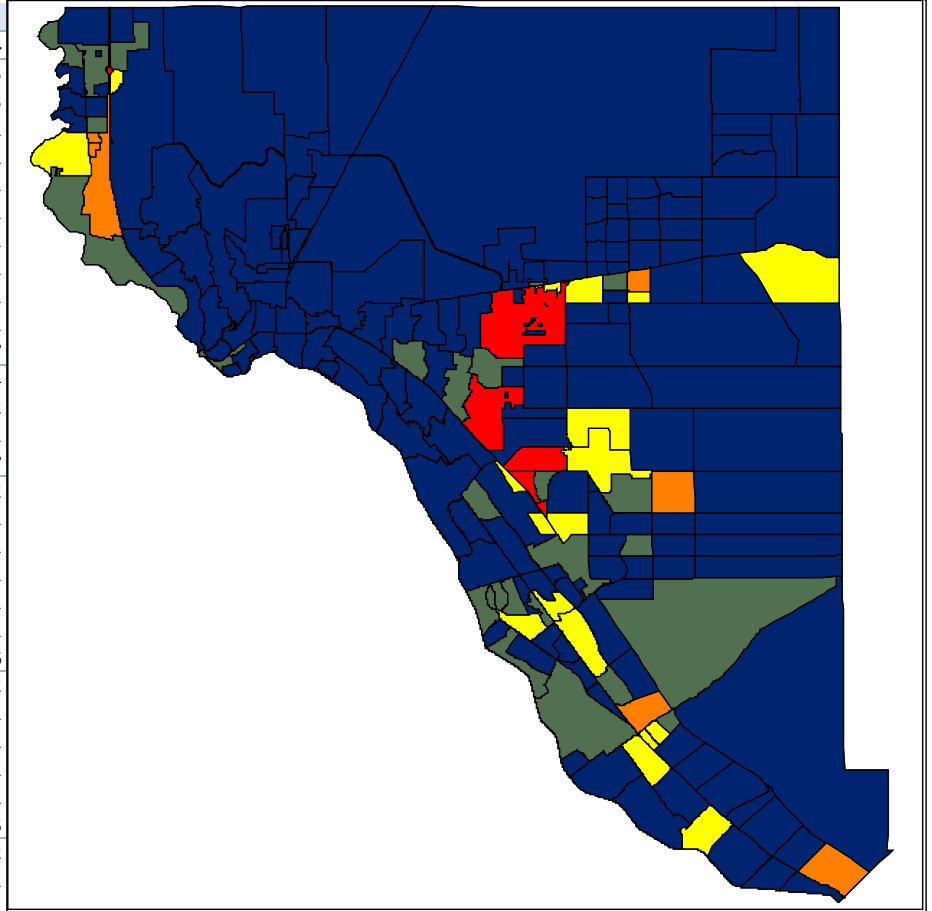
Weather Conditions at Time of Accident

CLEAR/CLOUDY	50
RAIN	1
SLEET/HAIL	2
SNOW	15
FOG	9
BLOWING SAND/SNO	1
SEVERE CROSSWIN	1
UNKNOWN	1
CLEAR	48
CLOUDY	8

Lighting Conditions at Time of Accident

DAYLIGHT	53
DARK, NOT LIGHTED	37
DARK, LIGHTED	35
DARK, UNK LIGHTING	4
DUSK	4
DAWN	2
UNKNOWN	1

DISTRICTS	ACCIDENTS
240A	14
35 LOOP 375 NORTH	3
31 LOOP 375 NORTH	3
34 LOOP 375 NORTH	1
29 LOOP 375 SOUTH	1
34 LOOP 375 SOUTH	1
SPUR 601 EXIT 25	1
30 LOOP 375 NORTH	1
27 LOOP 375 SOUTH	1
28 LOOP 375 NORTH	1
33 LOOP 375 NORTH	1
265F	7
1300 HORIZON BL	4
1301 HORIZON BL	2
1367 HORIZON BL	1
260F	7
13000 EASTLAKE BL	2
13400 EMERALD PARK	1
13300 EASTLAKE BL	1
EASTLAKE BL / GATEWAY WEST BL	1
12100 EASTLAKE DR	1
13200 EASTLAKE BL	1
260G	6
35 I-10 WEST	2
GREASEWOOD / TROLLOPE	1
37 I-10 WEST	1
14500 GATEWAY WEST BL	1
14000 GATEWAY WEST BL	1
200I	5
2 I-10 WEST	2
2 I-10 EAST	1
7900 S DESERT BL	1
3.5 I-10 EASTBOUND	1
220T	5
16 TRANSMOUNTAIN RD	1
17 LOOP 375 W	1
20 TRANSMOUNTAIN WEST	1
17 TRANSMOUNTAIN EAST	1
21 E TRANS MOUNTAIN RD	1
2391	4
42 LOOP 375 SOUTH	3
12220 PELLICANO DR	1
2393	4
3799 S JOE BATTLE BL	1
37 LOOP 375 S	1
12600 MONTANA AV	1
1900 JOE BATTLE S.	1
Grand Total	52



This report is generated from data as entered into the accident module of the I-Leads reporting system. The data has not been audited for accuracy.

Wednesday, January 06, 2010

Page (of (