

El Paso County Sheriff's Office Crime Analysis Section



**2007
Crime Summary**

This page intentionally left blank

Table of Contents

Introduction.....	4
Calls for Service.....	5
Part One Crime Comparison.....	8
Violent Crimes	9
Murder.....	10
Forcible Rape	10
Robbery:.....	13
Assault.....	16
Crimes Against Property.....	19
Burglary:	19
Larceny:	24
Motor Vehicle Theft:	27
Arson.....	31
Part One Clearance Rate	33
Summary	33

Introduction

This report is being submitted to provide a review of major trends and to explore changes in our county from year to year. Two types of data will be examined within this publication. Calls for service are calls of any type that were responded to by a El Paso County Sheriff's Office patrol vehicle. These include dispatched calls which originate through the Sheriff's Communication Office or the 911 Call Center, and self-initiated activity generated by the Patrol units in the field. The Tiburon Computer Aided Dispatch (CAD) system is the source for this data.

The second type of data is crime classified according to the Federal Bureau of Investigation's Uniform Crime Report (UCR) standards. Our Intergraph Records Management System (RMS) is the source of the data. Only the most serious crimes, identified as Part One Crimes, will be examined. Part One Crimes include:

1. Murder And Non-Negligent Manslaughter
2. Forcible Rape
3. Robbery
4. Aggravated Assault
5. Burglary
6. Larceny – Theft
7. Motor Vehicle Theft
8. Arson

The source for the "UCR Part One Crime" case count is our Criminal Records and Forensics Section (CREFS). The RMS system is still not used for UCR reporting. The UCR tally is accomplished by manually logging cases into a journal. For this reason, I have not been able to match cases mentioned in this report to cases selected by CREFS clerks for inclusion in the UCR statistics. However, I will use the CREFS supplied UCR statistics for year to year comparison purposes only.

When crime type is changed for UCR reporting, the RMS is not corrected. As a result, I cannot guarantee that all crimes are included in a particular category. Any comparisons of trends within specific crime categories I make are based only on raw case data from the RMS system and do not reflect "Official" statistics.

Calls for Service

During 2007 there were 73,174 dispatched and self initiated calls for service where members of the Patrol Division responded. This number excludes administrative calls, such as court, distribution runs, special assignments, and non-law enforcement activity, like refueling the vehicles, school resource activity, and report writing. This is down 4.3% from the 76,490 calls for service in 2006.

The top ten activities were:

Traffic Stops	28,101
Out Checking	4,794
Checking a Vehicle	3,604
Civil Problem	3,178
911 Hangup calls	2,855
Checking a Suspect	2,323
General Assistance	2,231
Vehicle Disturbing	1,490
Alarm Calls	1,461
Follow-ups	1,299

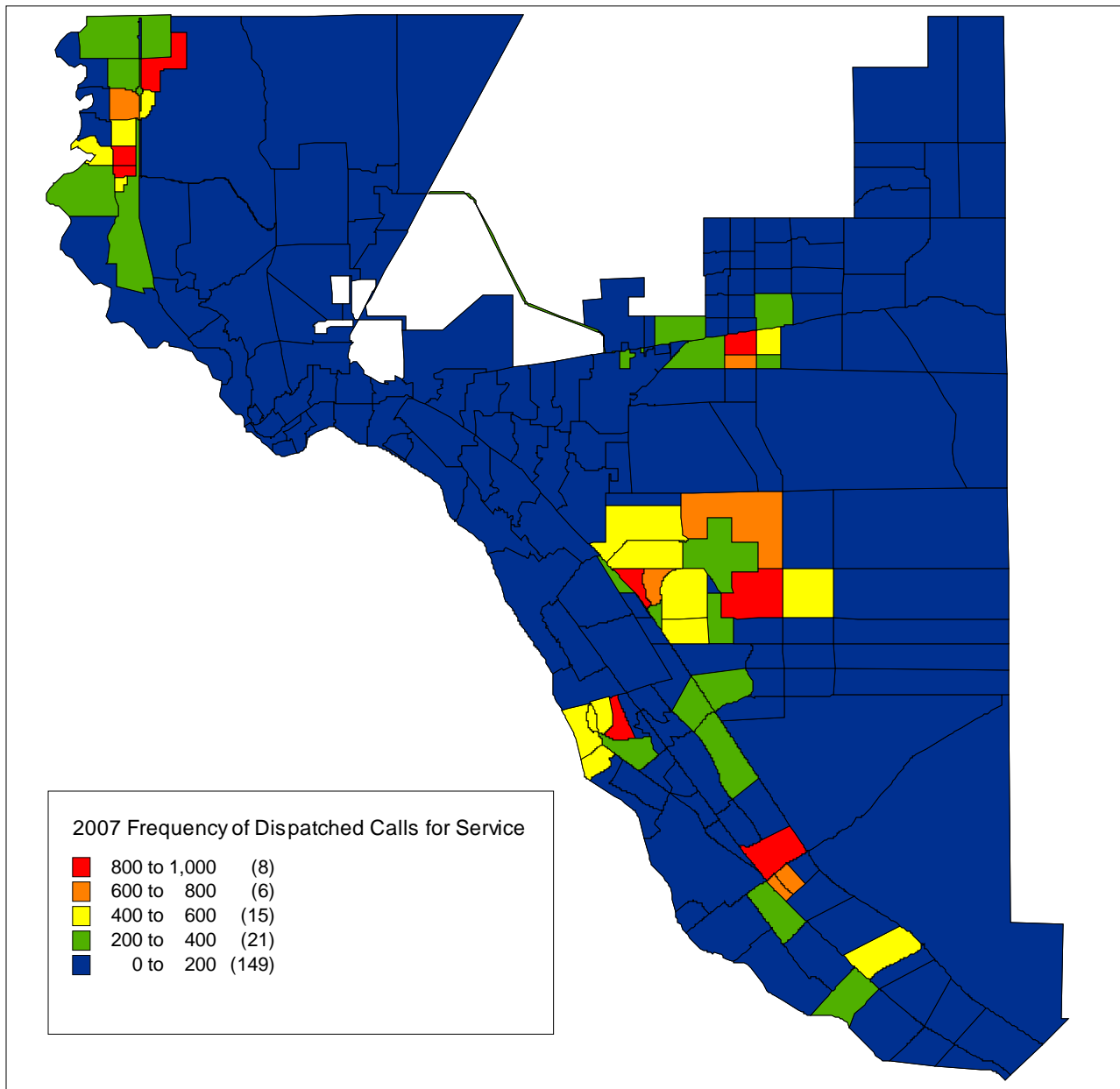
Of the citizen initiated calls for service, civil problems, 911 hangups, alarms, and vehicles disturbing generate the most incidents.

The top ten locations for number of calls for service were:

12501 Montana Av.	Montana Station	609
436 E. Vinton Rd.	Vinton Station	493
601 E. Overland Av.	Downtown Detention Facility	388
4815 Alameda Av.	R. E. Thomason General Hospital	373
1300 Horizon Bl.	Love's Truck Stop	322
1301 Horizon Bl.	Flying J Truck Stop	272
601 Westway Dr.	Petro II Truck Stop	219
13900 Montana Av.	Exxon Station/Convenience Store	206
Montana Av. & N. Zaragoza Rd.	High Traffic Intersection	196
12370 Socorro Rd.	7-Eleven Convenience Store	281

Two of the locations with the highest frequency of calls are the Montana Station and the Vinton Station. People coming to the stations for assistance rather than calling are responsible for the high volume. Civil problems are the most common walk-in calls at both stations, with 100 at Montana Station and 115 at Vinton Station. Three truck stops within Sheriff's Office primary jurisdiction account for 813 calls. The majority of the calls are traffic stops with 145, followed by thefts with 61 and civil problems with 59.

By removing the most common types of self-initiated calls, like units out checking and traffic stops, the top ten addresses still include eight from the original list. The Montana and Vinton patrol stations are present with Thomason Hospital, all three truck stops, and the 7-Eleven Store. The most common calls at the truck stops are thefts, civil problems, and motor vehicle accidents. The most common calls at the convenience store are thefts.



This map shows the locations generating the highest numbers of dispatched calls. This does not include self-initiated or administrative call types.

This table shows calls for service by district. These are calls for service where a Sheriff's Office patrol unit responded and include administrative calls. This also shows time spent handling calls

Calls for Service Comparison Year 2007 to Year 2006

District	City of					Horizon					TOTAL				
	200	210	220	Anthony	El Paso	240	250	260	270	280		290	Clint	City	Socorro
2007 Calls	6019	3868	4671	541	10613	6912	6928	11292	7109	6075	7312	1238	1967	2274	76819
2006 Calls	6512	5316	3946	580	11915	6897	7312	9983	8075	6569	8915	1528	1549	2179	81276
% Change	-7.57%	-27.24%	18.37%	-6.72%	-10.93%	0.22%	-5.25%	13.11%	-11.96%	-7.52%	-17.98%	-18.98%	26.99%	4.36%	-5.48%
2007 Hours Used	3213	1823	2110	425	7362	3221	3788	7049	4171	3135	3814	583	1122	948	42764
2006 Hours Used	3300	2398	1658	519	7183	3505	4000	6561	4650	3306	4271	823	868	1034	44076
% Change	-2.64%	-23.98%	27.26%	-18.11%	2.49%	-8.10%	-5.30%	7.44%	-10.30%	-5.17%	-10.70%	-29.16%	29.26%	-8.32%	-2.98%

Station Comparison

Station	Upper Valley	Lower Valley	TOTAL
2007 Calls	15099	51107	66206
2006 Calls	16354	53007	69361
% Change	-7.67%	-3.58%	-4.55%
2007 Hours Used	7571	27831	35402
2006 Hours Used	7875	29018	36893
% Change	-3.86%	-4.09%	-4.04%

NOTE: District 230 not included in station totals

Part One Crime Comparison

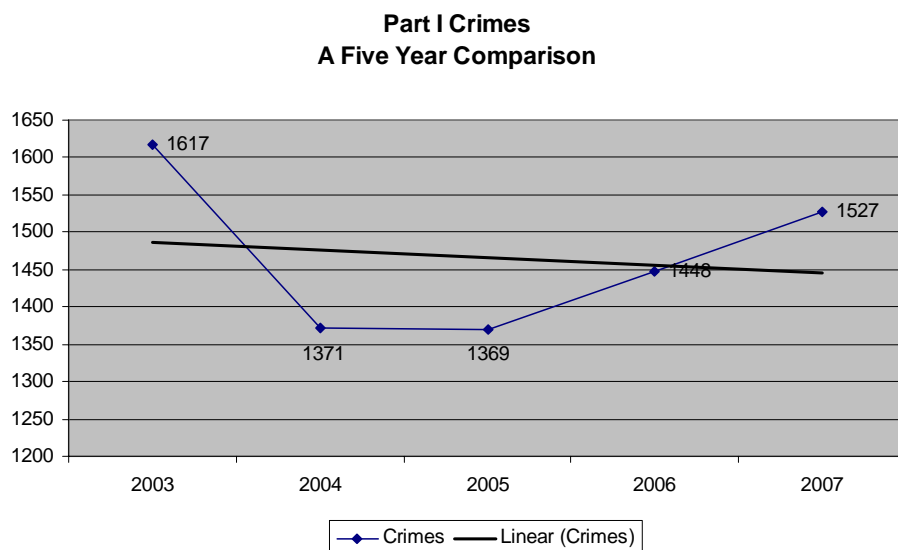
According to CREFS statistics, there were 1,545 Part One Crimes reported to the El Paso County Sheriff's Office in 2007. This is a 5.2% increase over the 1,468 Part One crimes reported in 2006.

Due to lack of availability of specific detail in the numbers furnished by CREFS, there is no further breakdown, such as by district, possible. Hopefully, as the new RMS system becomes better utilized, information such as Part One Crimes by district will become available.

Below is a summary of the 2007 Part One Crimes (by offense type) reported to the Sheriff's Office with comparisons to 2006 totals.

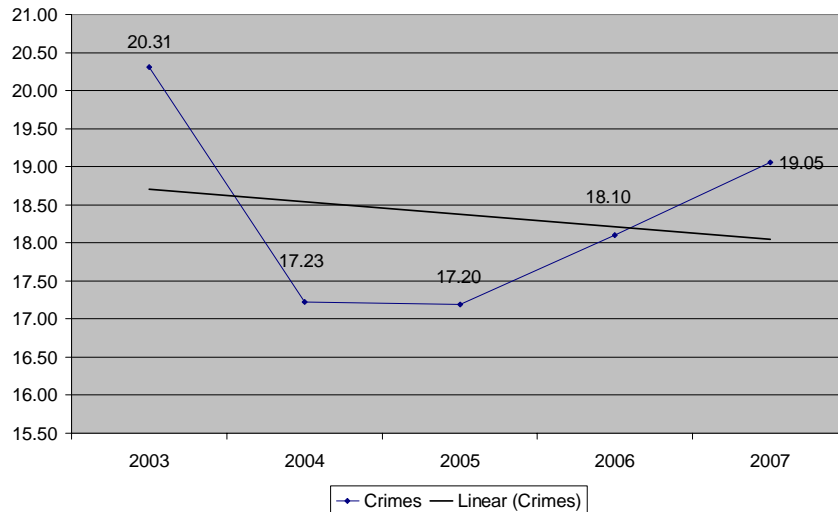
Part One Crime Categories	2007	2006	Change
Homicide	3	8	(-) five cases
Rape	18	25	(-) seven cases
Robbery	29	20	(+) nine case
Agg Assault	173	166	(+) seven cases
Violent Crime Total	223	219	(+) 1.8%
Burglary	363	309	(+) fifty-four cases
Theft	807	760	(+) forty-seven cases
Motor Vehicle Theft	113	142	(-) twenty-nine cases
Arson	21	18	(+) three cases
Property Crime Total	1,304	1,229	(+) 6.1%
Total Part One Crime	1,527	1,448	(+) 5.5%

The below chart shows a five-year comparison of total part one crime. Included is a linear trend line showing the overall trend.



The population of rural El Paso County continues to grow. Estimates of populations were obtained from the US Census Bureau. The estimated populations of the towns and cities with their own police departments were deducted from the estimated total county population to obtain the population of our primary service area. Based on estimates, this chart shows the number of Part One crimes per thousand population.

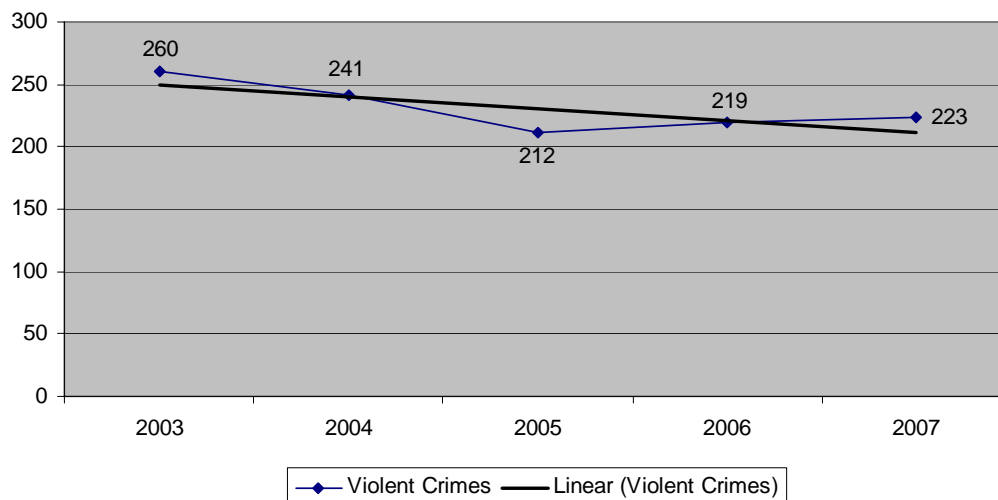
**Part I Crimes per Thousand Population
A Five Year Comparison**



Violent Crimes

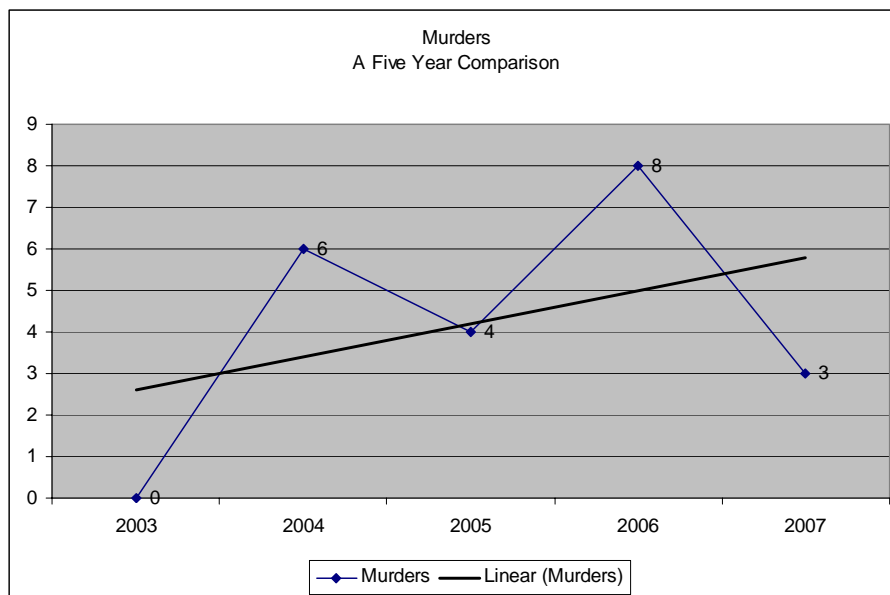
- Violent crimes are composed of four offenses: Homicide (murder and non-negligent manslaughter), Rape, Robbery, and Aggravated Assault. According to the Uniform Crime Reporting Program's definition, violent crime involves force or threat.
- In 2007 there were 223 violent crimes reported compared to 219 in 2006. This is an increase of 4 cases, or 1.8%.

**Part I Violent Crimes
A Five Year Comparison**



Murder: *The willful (non negligent) killing of one human being by another.*

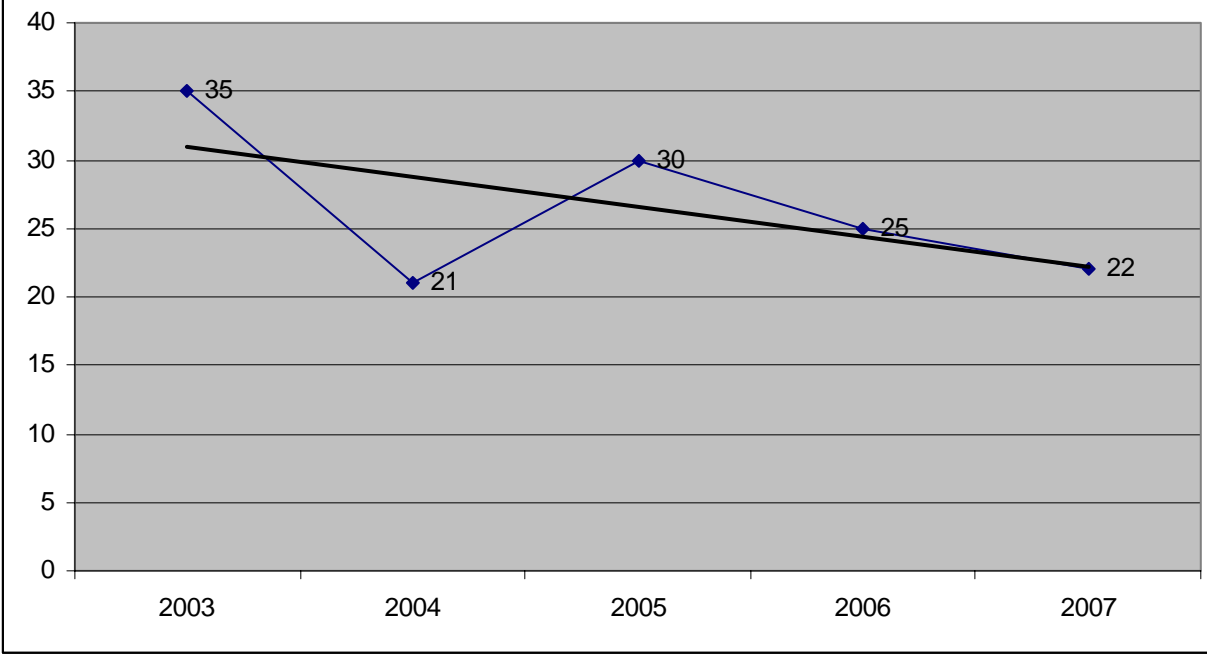
There were three reported non-traffic homicides (murders/non-negligent manslaughters) in El Paso County during 2007. This is a significant drop from the eight cases reported in 2006. The victims were all female and ranged in age from 14 to 39 years old. Two of the victims were shot and the third victim's cause of death has yet to be determined. Two of the three victims may have been acquainted in some way with their killer. In the third case, the victim was in a crowd at a bonfire and was struck by a round fired into the crowd. She may not have been the intended target.



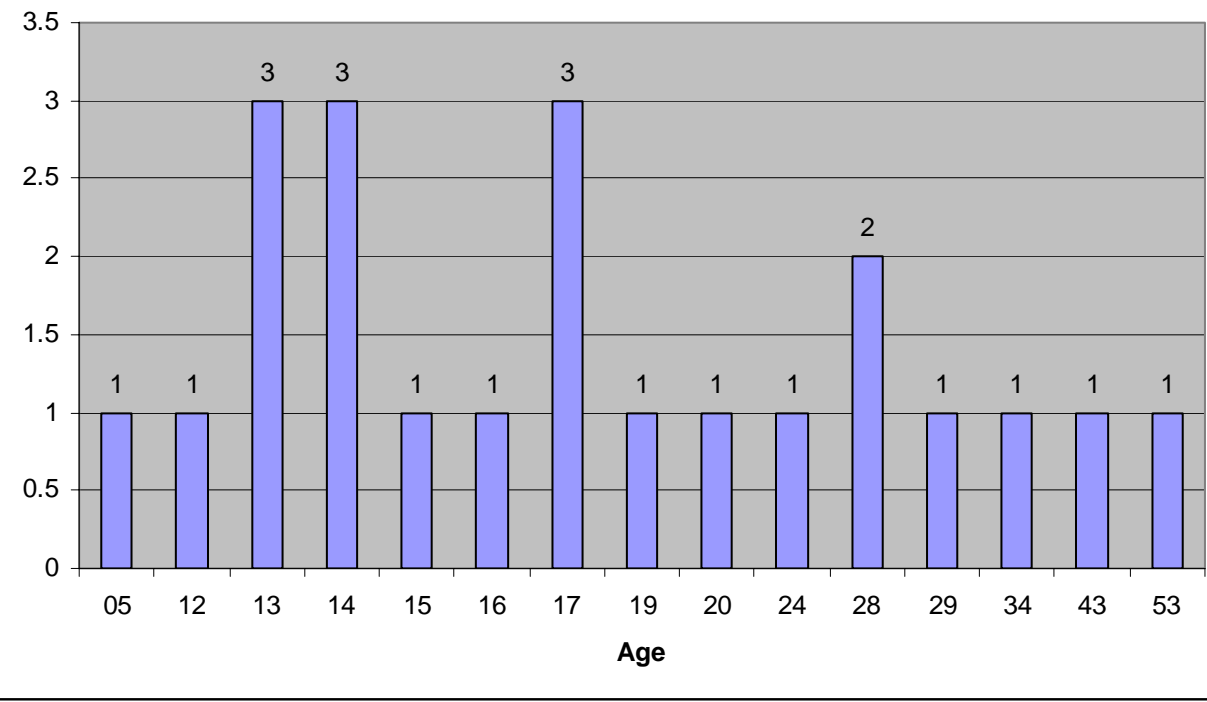
Forcible Rape: (Sexual Assault) *The carnal knowledge of a female forcibly and against her will. Assaults or attempts to commit rape by force or threat of force are also included; however, statutory rape (without force) and other sex offenses are excluded.*

Our UCR reports show there were twenty-two forcible rapes reported. This is down three cases from the twenty-five reported in 2006. Of these, one was an attempt, the rest were completed. The age range of the victim was between 5 to 53 years old with only one victim under ten years old. Twelve of the victims were 12 and 17 years old. In twenty of the cases the victim knew the attacker. Of the two stranger rapes, two involved a juvenile runaway picked up on the street and one case involved an adult who was walking within the City of El Paso and was grabbed as she walked through an apartment complex. There is no sign of any serial rapists operating in the area. In six of the reported cases the offender was a family member. One other case involved boyfriend/girlfriend. Five incidents occurred in the Horizon City area and five incidents occurred in the Montana Vista area.

Forcible Rape A Five Year Comparison



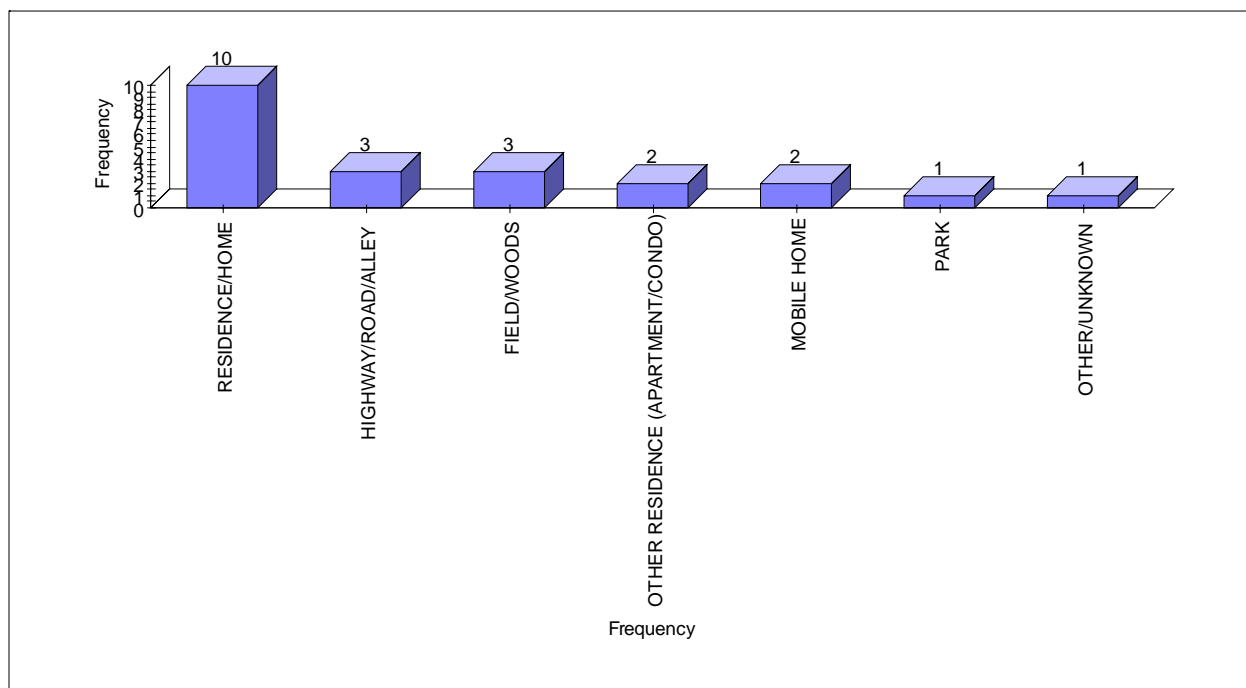
Age of Forcible Rape Victims



Area Where Forcible Rapes Occurred

Area	Number
MONTANA VISTA	5
HORIZON CITY	5
SPARKS	2
CANUTILLO	2
EL PASO	2
SOCORRO	1
FABENS	1
SAN ELIZARIO	1
ANTHONY	1
CLINT	1
UNKNOWN	1

Type Locations Where Sexual Assaults Occurred



Robbery: *The taking or attempt to take anything of value from the care, custody, or control of a person or persons by force or threat of force or violence and/or by putting the victim in fear.*

There were twenty-nine reported cases this year. This is up nine cases or 45% from the twenty robberies last year.

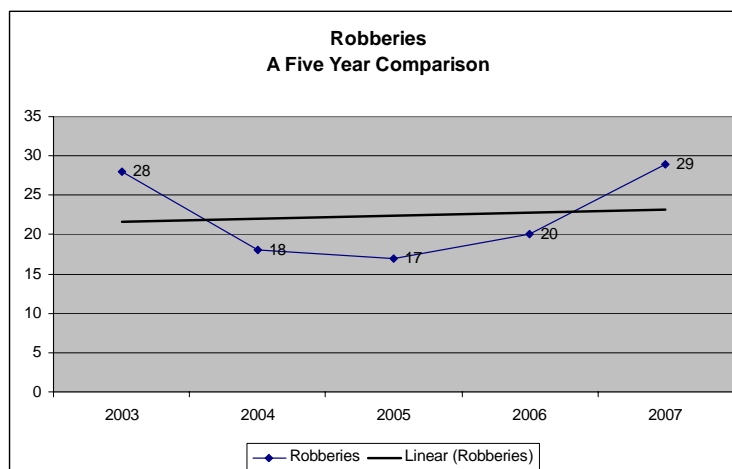
Of the twenty-nine robberies, twelve were aggravated robberies involving weapons. In one of the aggravated robberies and one of the robberies the offender(s) left without any property. Of all twenty-nine cases, sixteen of the victims were businesses and thirteen were persons.

Of the business robberies:

- Nine aggravated robberies and two robberies involved offenders demanding money by displaying or threatening to use a weapon. One involved the use of a baseball bat, one involved gestures indicating a weapon was present. The other ten involved the use of or threat to use a handgun. Two of the businesses were Finance Companies, one was a Beauty Salon, and the rest were convenience stores or small supermarkets. The two finance companies are most likely related, and it is possible some of the convenience stores are also related. A training issue was identified in that many of the reports had poor descriptions and other identifiers making comparison impossible.
- Five of the robberies were shopliftings or other thefts that escalated into robberies when offenders used force trying to escape.

Of the robberies from persons:

- Three were juvenile muggings, two of which a bike was taken, one where a hooded sweatshirt was taken.
- One was a purse snatching what escalated when the victim resisted.
- There were three carjackings. One occurred when a truck driver was mugged in the parking lot of a truck stop and the vehicle was taken. One was an attempted rape where the offender took the victim's vehicle after she escaped. The third occurred in the parking lot of a bar.
- Two were family violence cases where the offender took the victim's cell phone.
- Two involved robberies among drinking buddies that turned on one another.
- One was a home invasion robbery that could be drug related. The robbery did involve BA gang members.



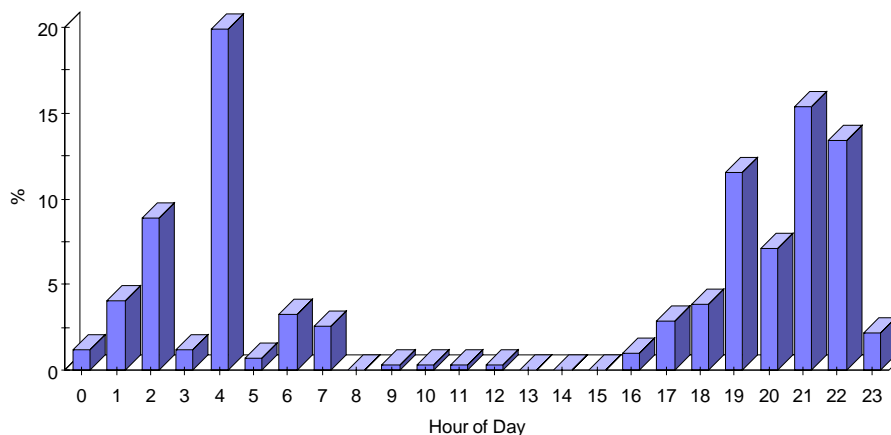
CHARGE	VICTIM TYPE	HANDGUN	KNIFE/CUTTING INSTRU (AX, ETC)	PERSONAL WEAPONS (HANDS, ETC)	BLUNT OBJECT (CLUB, ETC.)	MOTOR VEHICLE (AS WEAPON)	UNKNOWN	GRAND TOTAL
AGG ROBBERY	BUSINESS	6	0	0	1	0	2	3
	PERSON	2	1	0	1	0	0	5
<i>AGG ROBBERY Total</i>		8	1	0	2		2	
ROBBERY	BUSINESS	0		3	0	1	3	1
	PERSON	0	1	7	0	0	0	12
<i>ROBBERY Total</i>		0	1	10	0	1	3	
<i>Grand Total</i>		8	2	10	2	1	5	

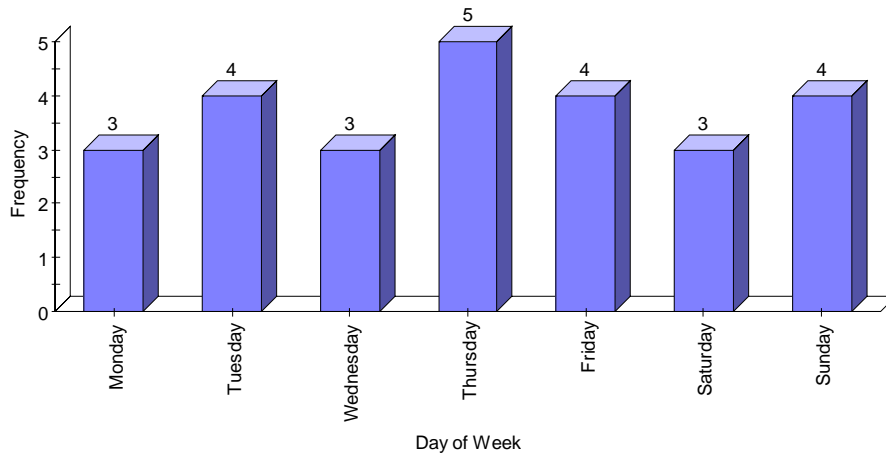
Area Where Robberies Occurred

CITY	AGGRAVATED ROBBERY	ROBBERY	GRAND TOTAL
CANUTILLO	2		2
CLINT	2	1	3
EL PASO		1	1
FABENS	4	3	7
HORIZON CITY	1	3	4
MONTANA VISTA		2	2
SAN ELIZARIO	2	5	7
SOCORRO	1		1
TORNILLO		1	1
VINTON	1		1
Grand Total	13	16	29

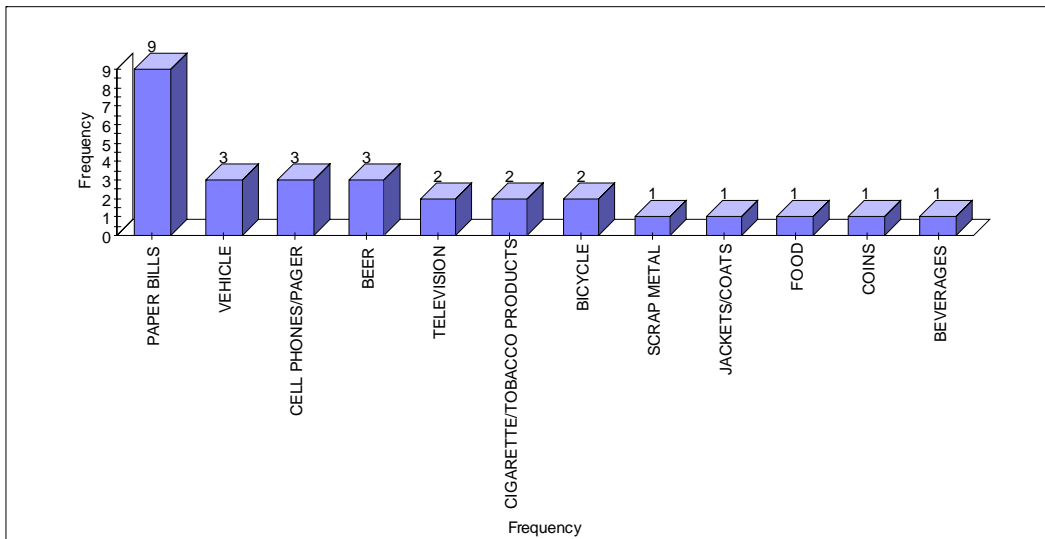
Time When Robberies Occurred

The greatest percentage of robberies occurred between 1900 and 2200 hours, however there was a large spike occurring between 0200 and 0400 hours. The robberies were fairly consistently spread across the days of the week.

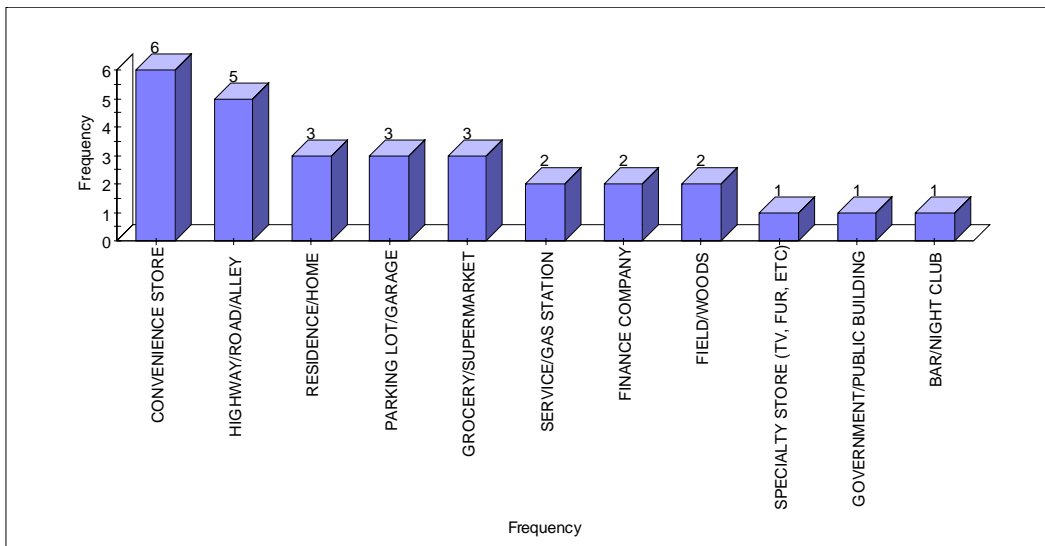




Type Property Taken



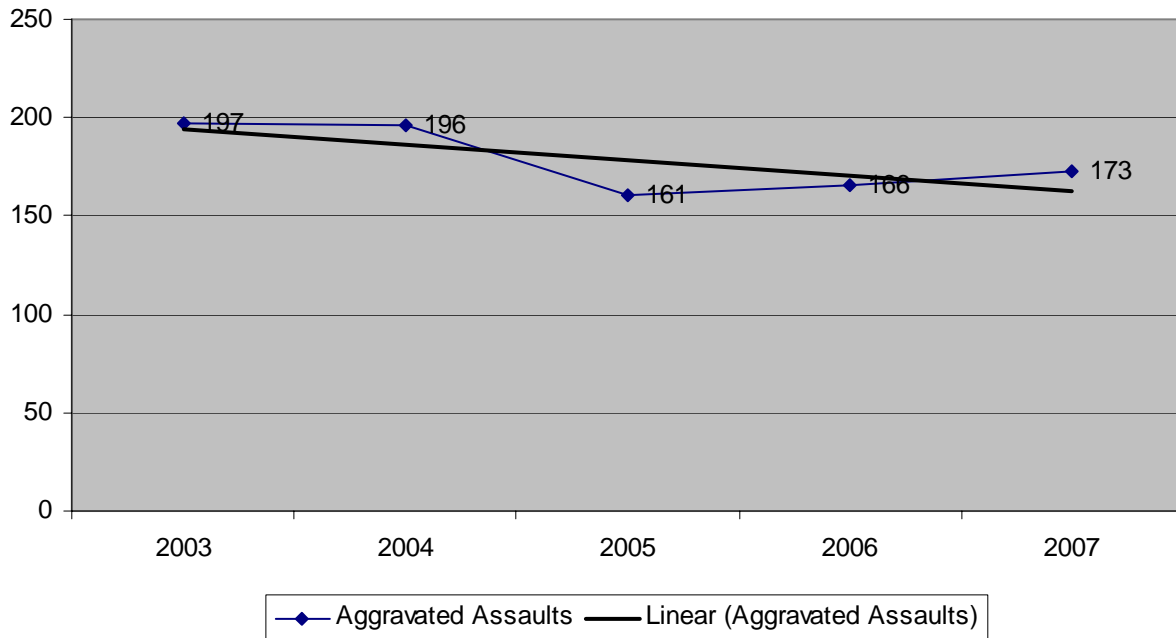
Type of Location



Assault: (Aggravated Assault) *The unlawful attack by one person upon another for the purpose of inflicting severe or aggravated bodily injury. (This type of assault is usually accompanied by the use of a weapon or by means likely to produce death or great bodily harm.)*

UCR statistics show aggravated assaults in 2007 were seven cases higher than 2006. However the five year trend is declining.

**Aggravated Assaults
A Five Year Comparison**



Due to the number of cases involved, and a problem with UCR coding and data entry, no effort was made to match RMS cases with UCR statistics for analysis purposes. The categories shown in the following comparisons are based strictly on the information entered in the reports. The information has only been audited for accuracy to the extent of filling in missing data. After filtering out cases miscoded and unfounded cases, I was able to locate 163 cases bearing the UCR code of Aggravated Assault. Of those cases, fifty-nine appear to be domestic violence related. Three incidents had four or more victims assaulted at the same time with one of them having seven victims.

Charge	No. of cases
AGG ASSAULT AGAINST PUBLIC SERVANT	4
AGG ASSAULT CAUSES SERIOUS BODILY INJ	17
AGG ASSAULT DATE/FAMILY/HOUSE W/WEAPON	20
AGG ASSAULT W/DEADLY WEAPON	119
DEADLY CONDUCT	2
CRIM ATT/MURDER	1
GRAND TOTAL	163

The breakdown by relationship between victim and offender is:

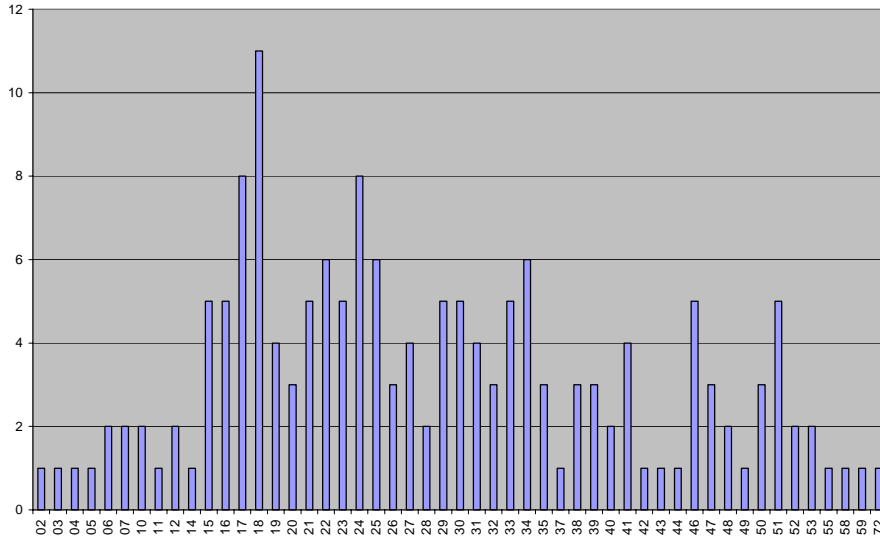
VICTIM'S RELATIONSHIP TO OFFENDER	Total
ACQUAINTANCE	32
BOYFRIEND/GIRLFRIEND	11
CHILD	2
COMMON-LAW SPOUSE	9
EX-SPOUSE	3
FRIEND	9
GRANDPARENT	1
IN-LAW	4
NEIGHBOR	5
OTHER FAMILY MEMBER	6
PARENT	1
RELATIONSHIP UNKNOWN	24
SIBLING	6
SPOUSE	13
STEPCHILD	2
STRANGER	35
GRAND TOTAL	163

The breakdown by type of weapon used is:

WEAPON USED	Total
BB GUN	2
BLUNT OBJECT (CLUB, ETC.)	39
CLUB/BLACKJACK/BRASS KNUCKLES	3
FIREARM (TYPE NOT STATED)	2
HANDGUN	14
KNIFE/CUTTING INSTRU (AX, ETC)	41
LETHAL CUTTING INSTRUMENT	5
MOTOR VEHICLE (AS WEAPON)	39
PERSONAL WEAPONS (HANDS, ETC.)	9
RIFLE	3
UNKNOWN	6
Grand Total	163

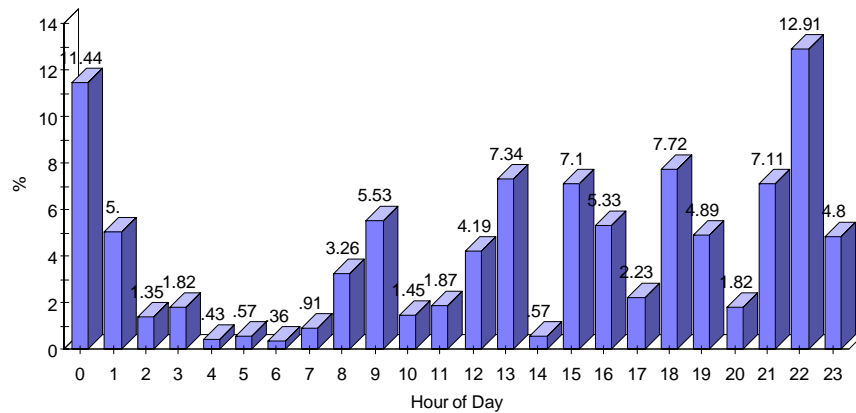
Of all victims, the most cases (modal average) occurred when the victim was 18 years old. The age of all victims is displayed in the following chart:

Age of Agg Assault Victims



Times of Occurrence

The late evening hours are the most common times for aggravated assaults to occur, however there are significant cases just after lunchtime, after school, and after work.

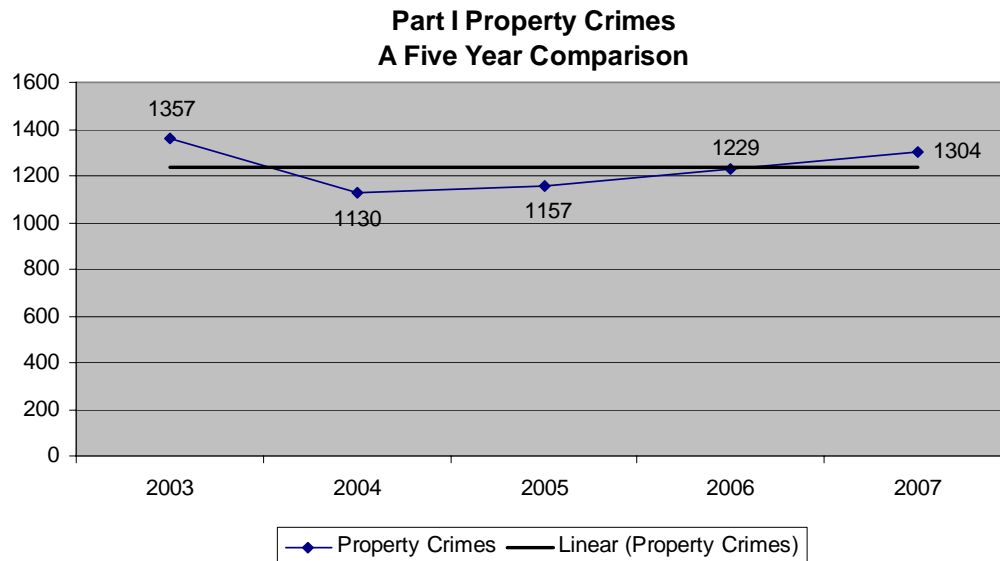


The breakdown by location is:

LOCATION	Total
MONTANA VISTA	33
SAN ELIZARIO	28
CLINT	25
HORIZON CITY	22
CANUTILLO	20
FABENS	14
VINTON	5
SPARKS	5
JAIL ANNEX	3
DDF	2
TORNILLO	2
EL PASO	2
WESTWAY	1
SOCORRO	1
Grand Total	163

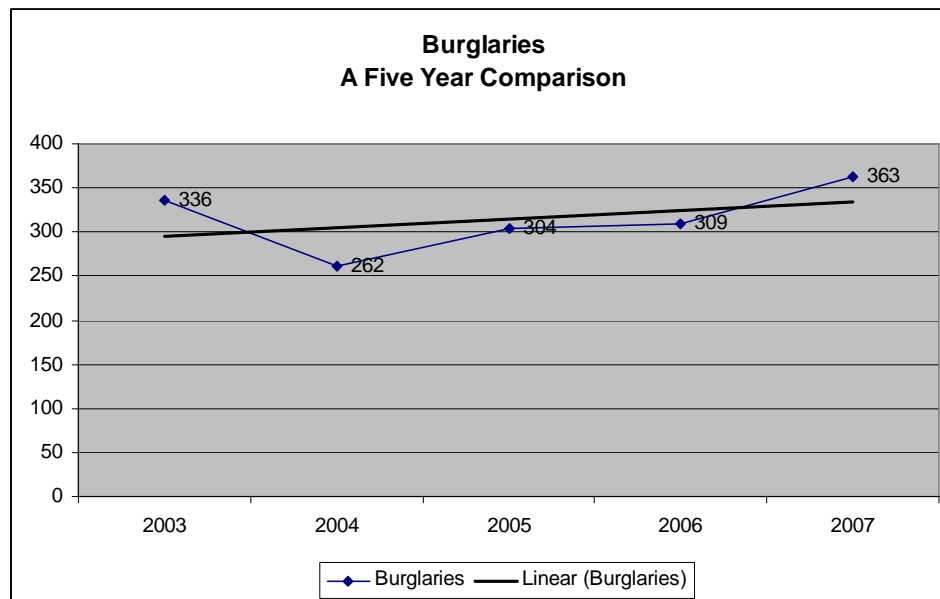
Crimes Against Property

- This category includes the total of all burglaries, larcenies (thefts), arsons, and thefts of motor vehicles. According to the Uniform Crime Reporting Program's definition, property crimes involve the taking of property without the use of force against the victim.
- There were 1,304 total property crimes reported during 2007. This is a 6.1% increase over the 1,229 reported during 2006.



Burglary: *The unlawful entry of a structure to commit a felony or theft. (The use of force is not required to classify an offense as burglary.)*

There were 363 burglaries reported during 2007. This was a 17.5% increase over the 309 cases reported in 2006.



Due to the number of cases involved, no effort was made to match RMS cases with UCR statistics for analysis purposes. The categories shown in the following comparisons are based strictly on the information entered in the reports. The information has only been audited for accuracy to the extent of filling in missing data. RMS shows 377 cases coded with the 220 UCR code for burglary in comparison to the 310 identified in UCR statistics. Of those 377 cases, 222 were burglaries of habitation, 144 were burglaries of building, and 11 were burglaries of habitation with intent to commit other felony. During the course of the year, Crime Analysis identified burglary series in Montana Vista (one habitation and one business), Tornillo businesses, construction site burglaries at the new Outlet Mall, and habitations in the Colonias. All series ended either with arrests or due to increased directed patrol activities.

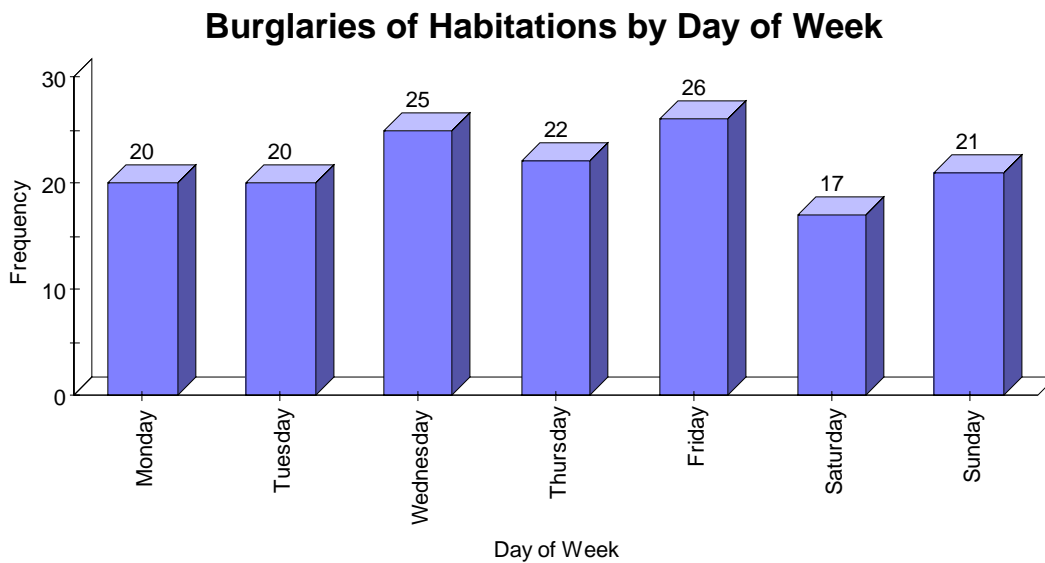
The breakdown by type offense and location type is:

<i>Location Type</i>	<i>BURGLARY OF HABITATION</i>	<i>BURGLARY OF BUILDING</i>	<i>BURGLARY HABITATION INTEND OTHER FELONY</i>	<i>Grand Total</i>
RESIDENCE/HOME	178	18	11	207
MOBILE HOME	40	3		43
COMMERCIAL/OFFICE BUILDING		27		27
STORAGE SHED OF HABITATION		14		14
STORAGE SHED OF BUILDING		13		13
CONVENIENCE STORE		12		12
SALVAGE/RECYCLING YARD		9		9
SCHOOL/COLLEGE		7		7
RESTAURANT		6		6
GROCERY/SUPERMARKET		6		6
OTHER RESIDENCE (APARTMENT/CONDO)	4	2		6
CONSTRUCTION SITE		4		4
SPECIALTY STORE (TV, FUR, ETC)		4		4
INDUSTRIAL/ MANUFACTURING		4		4
RENTAL/STORAGE FACILITY		4		4
DEPARTMENT/DISCOUNT STORE		3		3
CHURCH/SYNAGOGUE/ TEMPLE		2		2
DRUGSTORE/DR`S OFFICE/HOSPITAL		2		2
BANK/SAVINGS & LOAN		1		1
SERVICE/GAS STATION		1		1
PAWNSHOP/SECOND HAND STORE		1		1
BAR/NIGHT CLUB		1		1
Grand Total	222	144	11	377

The area where the offenses occurred breaks down as follows:

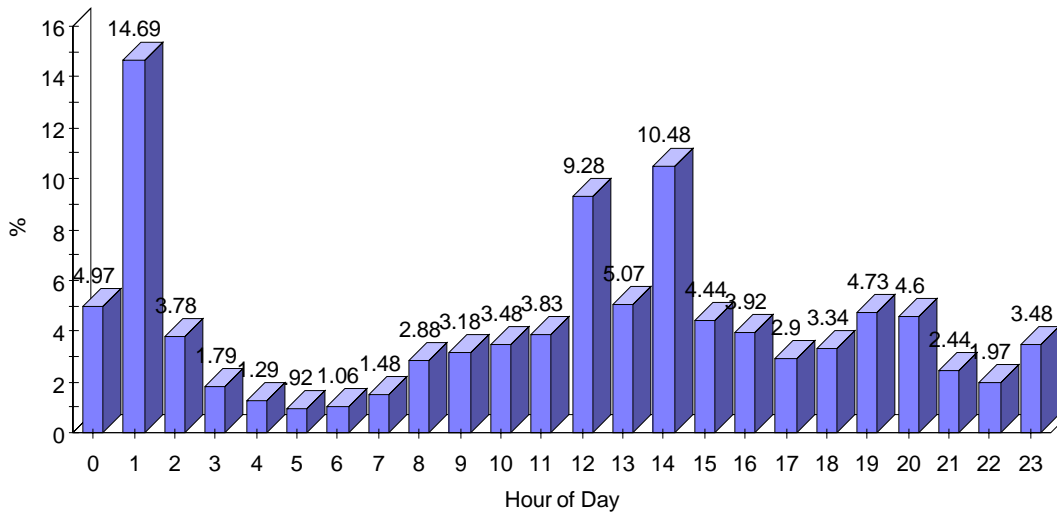
<i>City / Area</i>	<i>BURGLARY HABITATION INTEND OTHER FELONY</i>	<i>BURGLARY OF BUILDING</i>	<i>BURGLARY OF HABITATION</i>	<i>Grand Total</i>
MONTANA VISTA	5	27	53	85
HORIZON CITY	2	22	36	60
SAN ELIZARIO	1	7	39	47
CANUTILLO	1	22	15	38
FABENS		17	19	36
CLINT	1	14	18	33
SPARKS		10	18	28
TORNILLO	1	10	8	19
WESTWAY		6	10	16
VINTON		6	6	12
EL PASO		2		2
SOCORRO		1		1
Grand Total	11	144	222	377

The following charts are based on the analysis of all cases with a date range of occurrence less than 24 hours.



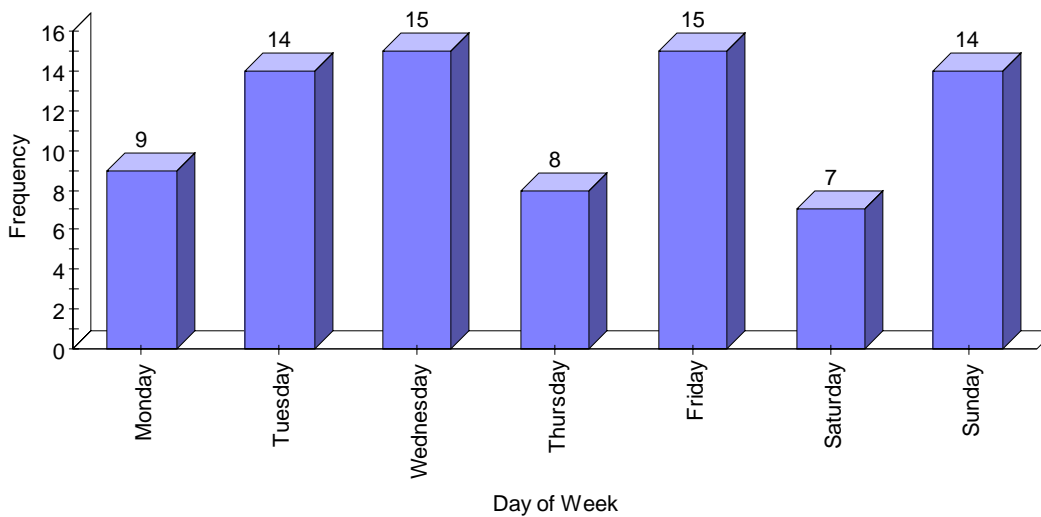
There is no significant deviation from day to day.

Burglaries of Habitations by Time of Day (Weighted Method)



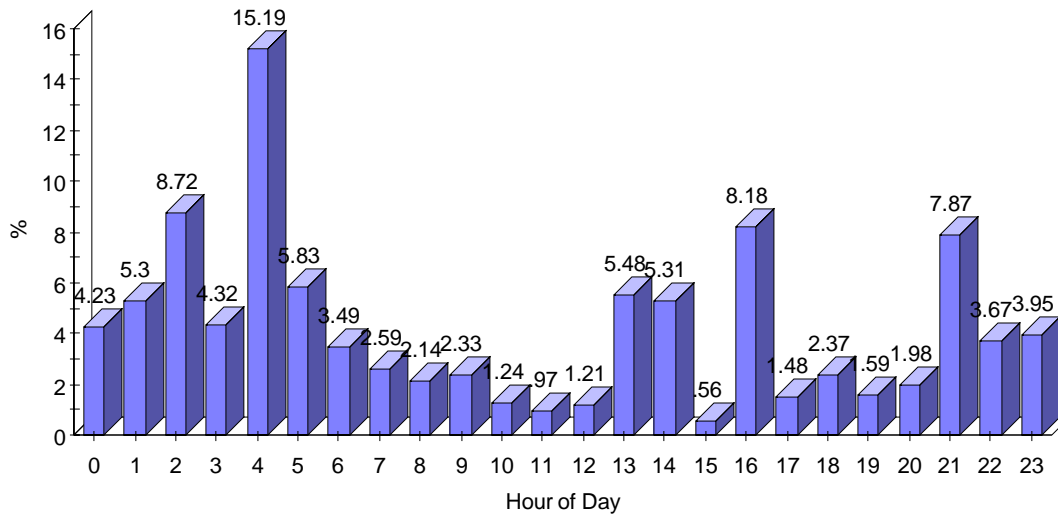
There seems to be trends exhibited during the early afternoon hours, and a second lesser during the early evenings. There is a definite spike around 0100 hours.

Burglaries of Business by Day of Week



Wednesday and Friday are the most popular days, followed by Tuesday and Sunday. Saturday is the least active.

Burglaries of Business by Time of Day (Weighted Method)



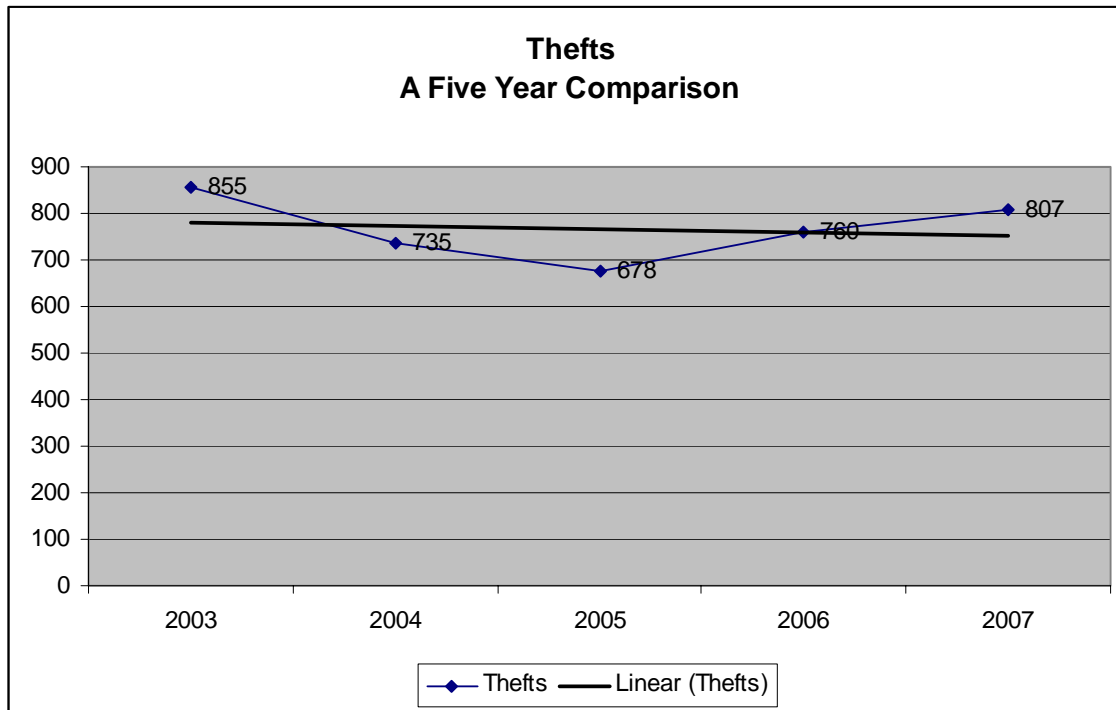
The early morning hours seem to be the most active for business burglaries.

The below table lists the top 10 most popular types of property taken. Jewelry is the top item followed by televisions. Tools are also popular as are other electronic items.

<i>Property Type</i>	<i>Total</i>
JEWELRY	118
TELEVISION	57
POWER TOOLS	44
DVD PLAYER/RECORDER	41
PAPER BILLS	36
GARAGE TOOLS (WRENCHES,RATCHETS)	35
CLOTHING	32
VIDEO GAME SYSTEMS/XBOX,PS, ETC	28
RADIO/STEREO SYSTEM/NOT ATTACHED TO CAR	27
HAND TOOLS	26

Larceny: (Theft) *The unlawful taking, carrying, leading, or riding away of property from the possession or constructive possession of another. It includes such crimes as shoplifting, pocket-picking, purse-snatching, thefts from motor vehicles (burglaries of autos), thefts of motor vehicle parts or accessories, bicycle thefts, etc., in which no use of force, violence, or fraud occurs. (This crime category does NOT include embezzlement, confidence games, forgery, and worthless checks. Motor vehicle theft is a separate UCR category.)*

There were 807 thefts reported last year. This is a 6.2% increase over the 760 reported in 2006. However the 807 cases are within one standard deviation of the five-year average of 757.



Due to the number of cases involved, no effort was made to match RMS cases with UCR statistics for analysis purposes. The categories shown in the following comparisons are based strictly on the information entered in the reports. The information has only been audited for accuracy to the extent of filling in missing data. RMS shows 849 cases coded with the 23* UCR code for Theft.

The breakdown by type of offense is:

UCR Description	Total
ALL OTHER LARCENY	557
PURSE-SNATCHING	5
SHOPLIFTING	69
THEFT FROM BUILDING	18
THEFT FROM COIN-OPERATED MACHINE	1
THEFT FROM MOTOR VEHICLE	174
THEFT OF MOTOR VEHICLE PARTS/ACCESSORIES	25
Grand Total	849

The table shows a significant number of thefts coded as “all other larceny”. This may be due to improper offense selection of shoplifting offenses. A scan of the offenses show that 128 of the “all other larceny” offenses occurred at some type of store.

The top ten locations for thefts by Location type is:

Location Type	Total
RESIDENCE/HOME	316
CONVENIENCE STORE	112
PARKING LOT/GARAGE	78
SERVICE/GAS STATION	51
SCHOOL/COLLEGE	39
COMMERCIAL/OFFICE BUILDING	31
HIGHWAY/ROAD/ALLEY	25
CONSTRUCTION SITE	20
DEPARTMENT/DISCOUNT STORE	19
GOVERNMENT/PUBLIC BUILDING	19

The areas where thefts are occurring are:

Area	ALL OTHER LARCENY	THEFT FROM MOTOR VEHICLE	SHOPLIFTING	THEFT OF MOTOR VEHICLE PARTS/ACCESSORIES	THEFT FROM BUILDING	PURSE-SNATCHING	THEFT FROM COIN-OPERATED MACHINE	Grand Total
MONTANA VISTA	117	35	7	15	3			177
CANUTILLO	85	34	13	3	6			141
HORIZON CITY	75	35	6	4	2	1		123
SAN ELIZARIO	48	9	22		2	1		82
FABENS	53	20	8				1	82
CLINT	41	8	6	1	1			57
WESTWAY	38	11	3			1		53
EL PASO	39	6	1		2	1		49
TORNILLO	21	1		1	2	1		26
VINTON	17	3	2					22
SPARKS	11	9		1				21
SOCORRO	10	1	1					12
ANTHONY	2	1						3
UNKNOWN		1						1

The top five addresses in generating theft cases are:

Address	Name	Total
12370 SOCORRO RD	7-Eleven Store	32
1301 HORIZON BL	Flying J Truck Stop	28
601 WESTWAY BL	Petro II Truck Stop	24
1300 HORIZON BL	Love's Truck Stop	13
1295 HORIZON BL	Petro Truck Stop	11

It is interesting that the Petro Truck Stop located at 1295 Horizon Bl. is on this list, even though it is in the town of Socorro. Off-duty deputies employed by the business account for the cases.

Type of Property Taken

Items in this table were categorized by the type of property taken. If a case had 5 pieces of jewelry, \$40.00 in currency, and \$10.00 in coins taken, the items would be scored as jewelry-1 and Currency/Coin-1.

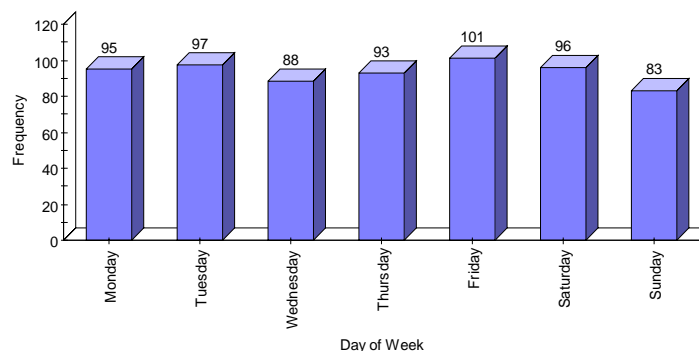
The top twenty categories of property taken are:

Property Type	Total
BEER	86
CURRENCY/COIN	79
POWER TOOLS	49
GASOLINE/DIESEL FUEL	47
CELL PHONES/PAGER	46
GOV ISSUED IDENTIFICATION CARD	42
RADIO/ATTACHED TO VEHICLE	42
TRASH CONTAINER	39
HAND TOOLS	38
TRAILER/FLATBED TRAILER	35
CLOTHING	32
OTHER AUTO PARTS	31
CREDIT/DEBIT CARD	30
WALLET	30
HANDBAG/PURSE	29
CONSTRUCTION MATERIAL	27
SPEAKERS	26
HOUSEHOLD ITEMS	23
RADIO/STEREO SYSTEM/NOT ATTACHED TO CAR	22
TIRES/WHEELS/RIMS	22
GARAGE TOOLS (WRENCHES,RATCHETS)	22

Beer runs and gas / fuel runs were high on the list along with thefts of cash and power tools. The number of cases where hand tools were taken could be misleading, as there is a separate category for garage tools to include wrenches and ratchets. With 38 cases of hand tools, and 22 cases of garage tools, the two combined would actually come in third.

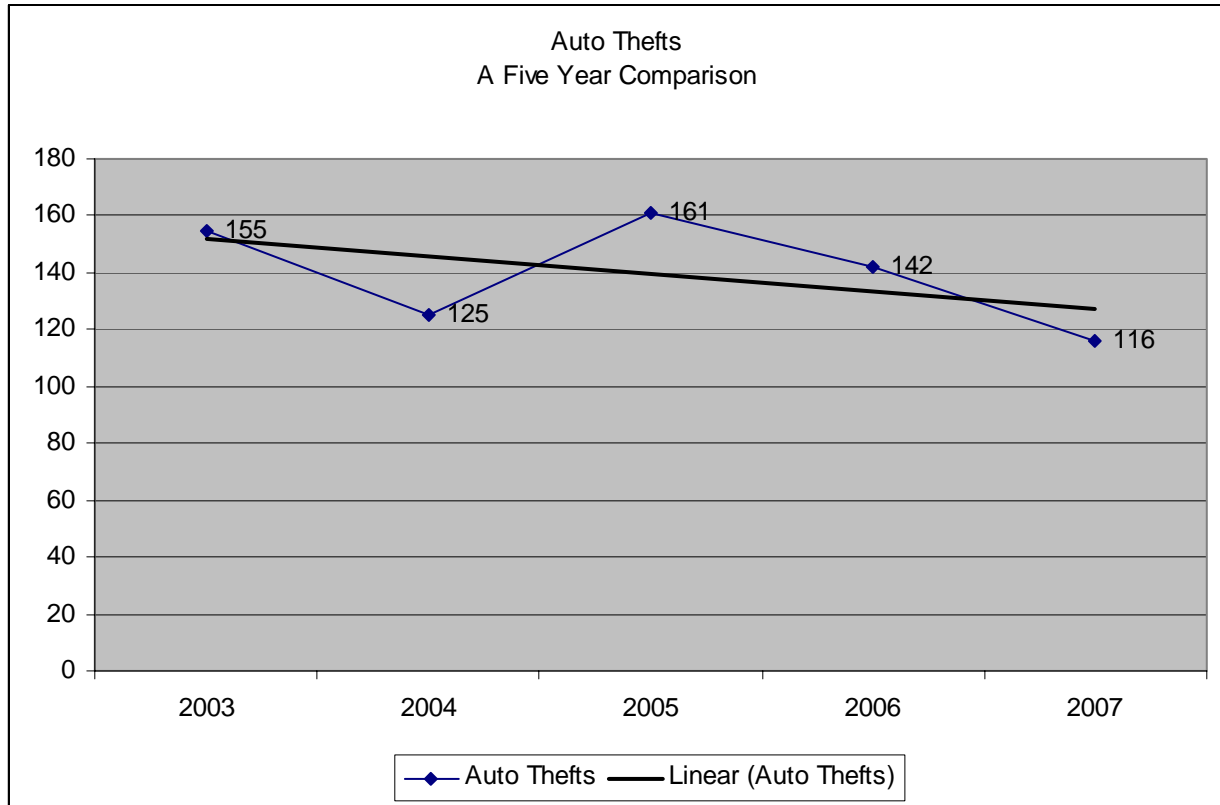
Cell phones and government issued ID cards, including driver's licenses, passports, resident alien cards, and SSN cards were also popular targets. Notably, there were 39 incidents where trash containers were taken.

Due to the diversity in the types of thefts, a time analysis would not be beneficial. Of the 653 cases where the specific day of occurrence could be determined, the number of thefts by day of the week is fairly even with no particular day showing a significant deviation from the mean.



Motor Vehicle Theft: *The theft or attempted theft of a motor vehicle, include the stealing of automobiles, trucks, busses, motorcycles, motor scooters, snowmobiles, etc.*

There were 116 valid reported motor vehicle thefts during 2007. However the UCR total was only 113. This was due to three 2005 cases being unfounded in 2007. The 116 cases were down 18.3% over the 142 reported in 2006. The five-year trend continues on the decline.



The breakdown by area is:

City	Total
HORIZON CITY	27
MONTANA VISTA	24
CANUTILLO	14
SAN ELIZARIO	12
FABENS	12
CLINT	11
EL PASO	4
WESTWAY	3
SPARKS	3
ANTHONY	2
VINTON	2
SOCORRO	1
TORNILLO	1
Grand Total	116

Of the twenty-six vehicles reported stolen in Horizon City, twenty-one were in the truck category that includes pickups, vans, and SUVs.

Of all vehicles stolen, 56 were pickups/vans/SUVs, 31 were passenger cars, 21 were ATVs, 4 were motorcycles, 2 were truck tractors, 1 was a golf cart, and 1 was a school bus. The 21 ATVs was dramatically up from the four stolen in 2006.

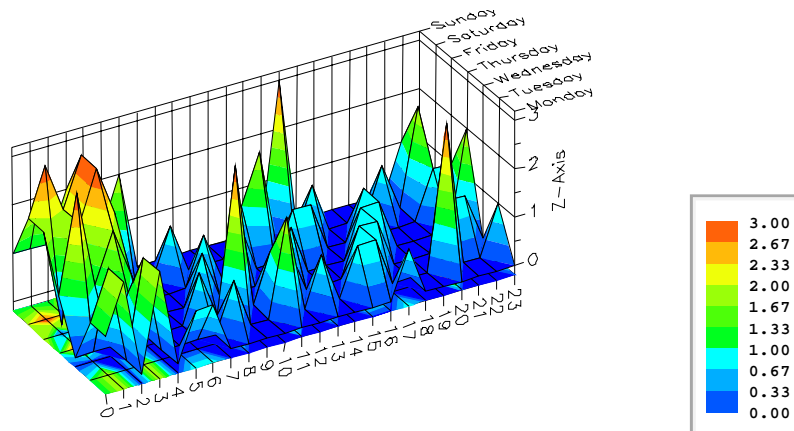
Ford is the most common make of vehicle stolen with 31.

The Ford pickup/SUV/Van is the most common type vehicle with 21 incidents.

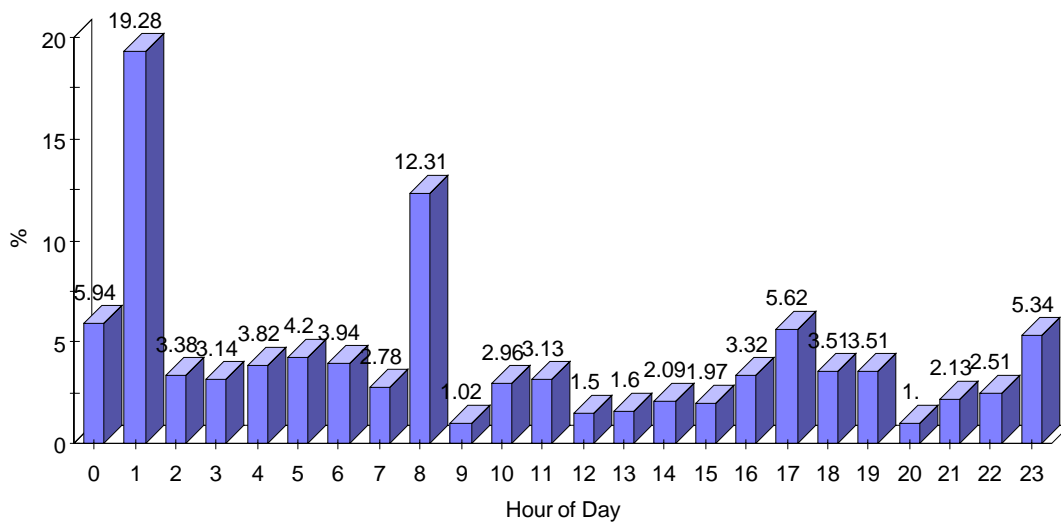
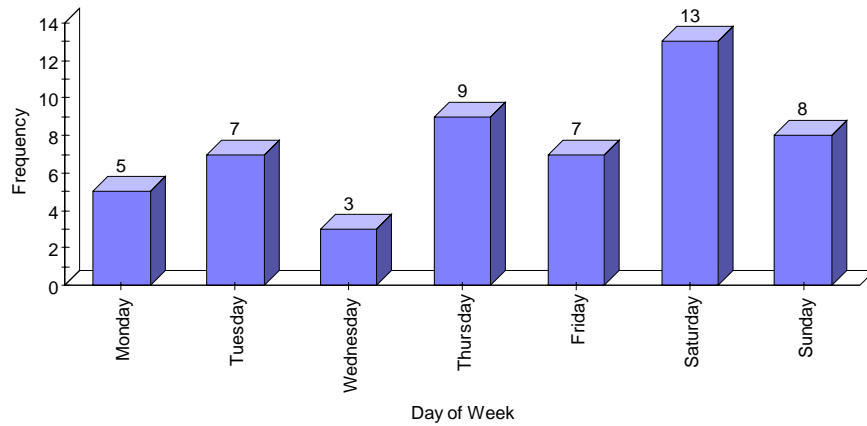
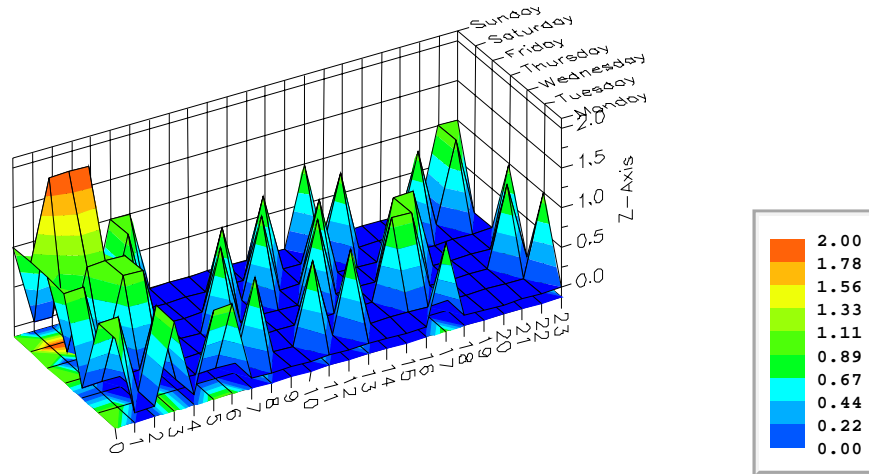
Six makes of vehicles comprise 56.6% of the vehicles stolen. The 6 makes of vehicles are shown in the below table, with each make broken down by type of vehicle. Ten vehicles, including 8 ATVs, 1 golf cart, and one motorcycle did not have the make listed in the report, or the victim did not know the make.

<i>Make</i>	<i>Type</i>	<i>Total</i>
FORD	PASSENGER CAR	5
	TRUCK	21
CHEVROLET	PASSENGER CAR	4
	TRUCK	13
GMC	TRUCK	7
HONDA	ATV	2
	PASSENGER CAR	4
YAMAHA	ATV	4
DODGE	PASSENGER CAR	2
	TRUCK	2
Grand Total		64

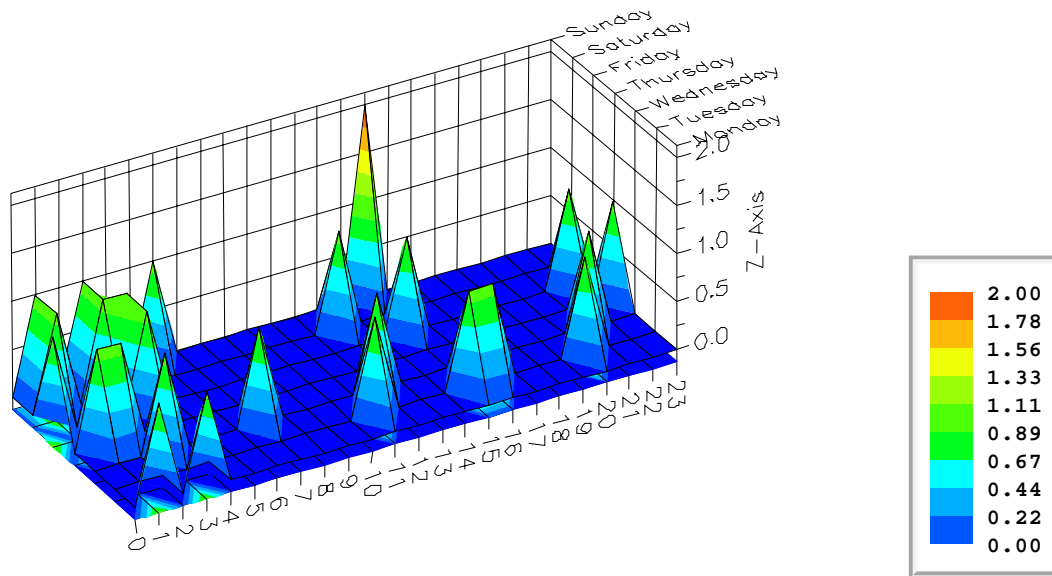
Of the 116 cases, 96 had a time of occurrence span of less than twenty four hours. The following charts are generated using all cases with a range of less than 24 hours. The Temporal topology chart shows most vehicles are stolen during the early morning hours during the weekends.



The following chart shows the temporal topology for trucks. The chart shows that Saturday morning between 0200 and 0300 is the most common time. The charts showing count by day of week and time of day (weighted method) confirm this.



The temporal topology chart for thefts of passenger cars shows most occur around 1500 hours with the highest number occurring on Sunday. However, the weekend is popular.



Most ATV thefts occur during the late morning hours with a spike around 0900 -1000 hours. Wednesdays and Fridays are the most popular days.

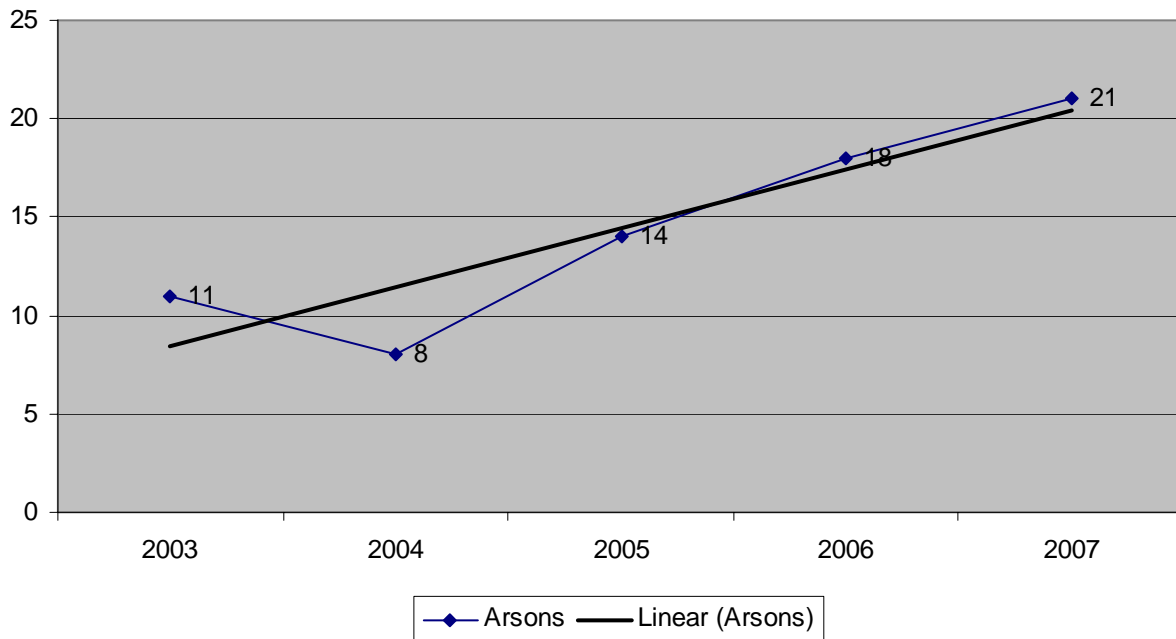
The following table shows the top five months for frequency of thefts for each of the top three categories of vehicle types. October had the most trucks stolen with 10, while September incurred the most passenger car thefts. February had the highest number of ATVs stolen.

Vehicle Type	Month	Total
TRUCK	Oct	10
	May	7
	Sep	6
	Mar	6
	Dec	5
PASSENGER CAR	Feb	5
	Sep	5
	Feb	4
	Aug	4
	Mar	3
ATV	May	3
	Feb	5
	Apr	4
	Mar	3
	Nov	2
	May	2
	Oct	2
Grand Total		76

Arson : *The willful or malicious burning or attempt to burn, with or without intent to defraud, a dwelling house, public building, motor vehicle or aircraft, personal property of another, etc.*

There were twenty-one arson cases reported in 2007. This is up three cases from the 2006 total of 18. The five year trend shows a steady increase.

**Arson
A Five Year Comparison**



The breakdown by target type is:

Target Type	Total
VEHICLE	12
HOME	4
ABANDONED STRUCTURE	3
DEPARTMENT/DISCOUNT STORE	1
JAIL CELL	1
Grand Total	21

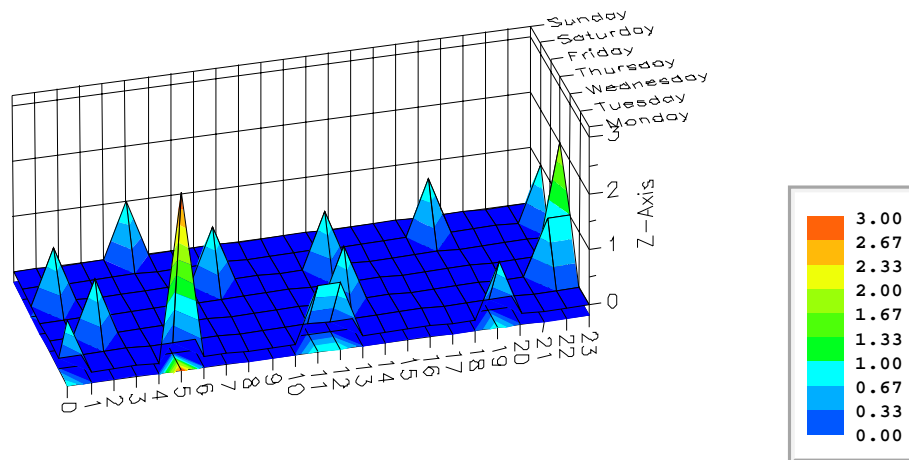
Of significance is that twelve of the twenty-one arsons were vehicle fires. The vehicle arsons were spread throughout the county.

The breakdown of arson offenses by area is:

city	Total
CANUTILLO	2
CLINT	1
FABENS	5
HORIZON CITY	4
SAN ELIZARIO	4
VINTON	1
WESTWAY	1
MONTANA VISTA	2
SPARKS	1
Grand Total	20

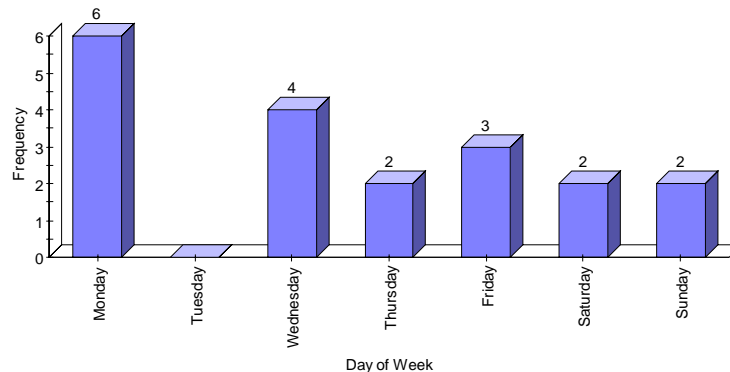
Temporal Analysis

Again, temporal analysis is only generated using events with a temporal range of less than 24 hours. Of all cases, two were excluded. Two distinct peaks occur, one around 0500 hours on Mondays and one around 2300 hours on Thursdays. Overall 2300 is the most prevalent time.



Day of Week

There were no cases occurring on Tuesdays. The most popular day was Monday, with six cases. Five of the six cases were vehicles.



Part One Clearance Rate

The below table shows the percentage of Part One Crimes cleared, either as cleared by arrest or exceptionally cleared. *It is possible that crimes committed in one year may not be cleared until a later year.*

- An offense is “cleared by arrest” when at least one person is arrested, charged with the commission of the offense, or turned over to the court for prosecution.
- An offense can be “exceptionally cleared” under the following circumstances:
 - Death of the offender
 - Prosecution denied
 - Extradition denied
 - Victim refused to cooperate
 - Juvenile in custody.

Offense Type	2006			2007			2006 National Clearance Rate
	Reported	Cleared	Clearance Rate	Reported	Cleared	Clearance Rate	
Homicide	8	7	87.5%	3	1	33.3%	60.7%
Rape	25	14	56.0%	18	10	55.6%	40.9%
Robbery	20	7	35.0%	29	11	37.9%	25.2%
Agg Assault	166	113	68.1%	173	115	66.5%	54.0%
Violent Crime Total	219	141	64.4%	223	137	61.4%	44.3%
Burglary	309	34	11.0%	363	54	14.9%	12.6%
Theft	760	102	13.4%	807	101	12.5%	17.4%
Motor Vehicle Theft	142	39	27.5%	113	33	29.2%	12.6%
Arson	18	5	27.8%	21	5	23.8%	18.0%
Property Crime Total	1226	180	14.7%	1300	193	14.8%	15.8%
Total Part One	1445	321	22.2%	1523	330	21.7%	N/A

Summary

Total Part One Crime was up 5.5% in 2007, led by robberies with an increase of 45% (9 cases), burglaries with an increase of 17.5% (54 cases), and arsons with an increase of 16.7% (3 cases). Significant decreases were seen in the number of auto thefts, which were down 20.4% (29 cases), sexual assaults which were down 28% (7 cases), and murders which were down 62.5% (5 cases).

The three crimes with the greatest percentage increase are also three crimes that directed patrol activities have historically been effective in addressing. In reviewing the cases, it appears that there is little effort from the populace to protect their property. 64% of the burglaries of habitation indicate that no force was used to gain entry. Directed crime prevention activities could also be utilized to influence public awareness.



El Paso County Sheriff's Office
Crime Analysis Unit
Tom Spinks – Analyst