



# EL PASO COMMISSIONERS COURT SPECIAL SESSION

Thursday, December 15, 2011

10:00 A.M.

# Department Presentations

## Health and Human Services Area:

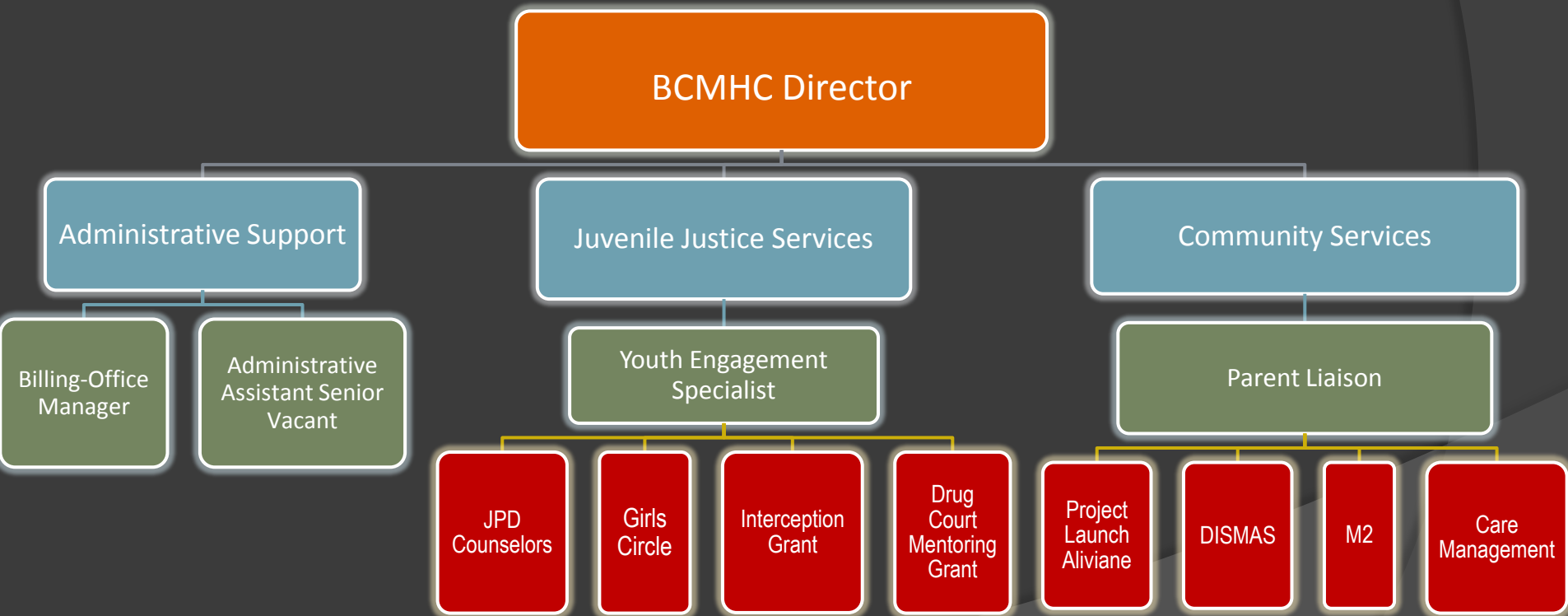
- a. Border Children's Mental Health Collaborative
- b. Juvenile Probation Department
- c. Family and Community Services
- d. Agricultural Extension
- e. Medical Examiners



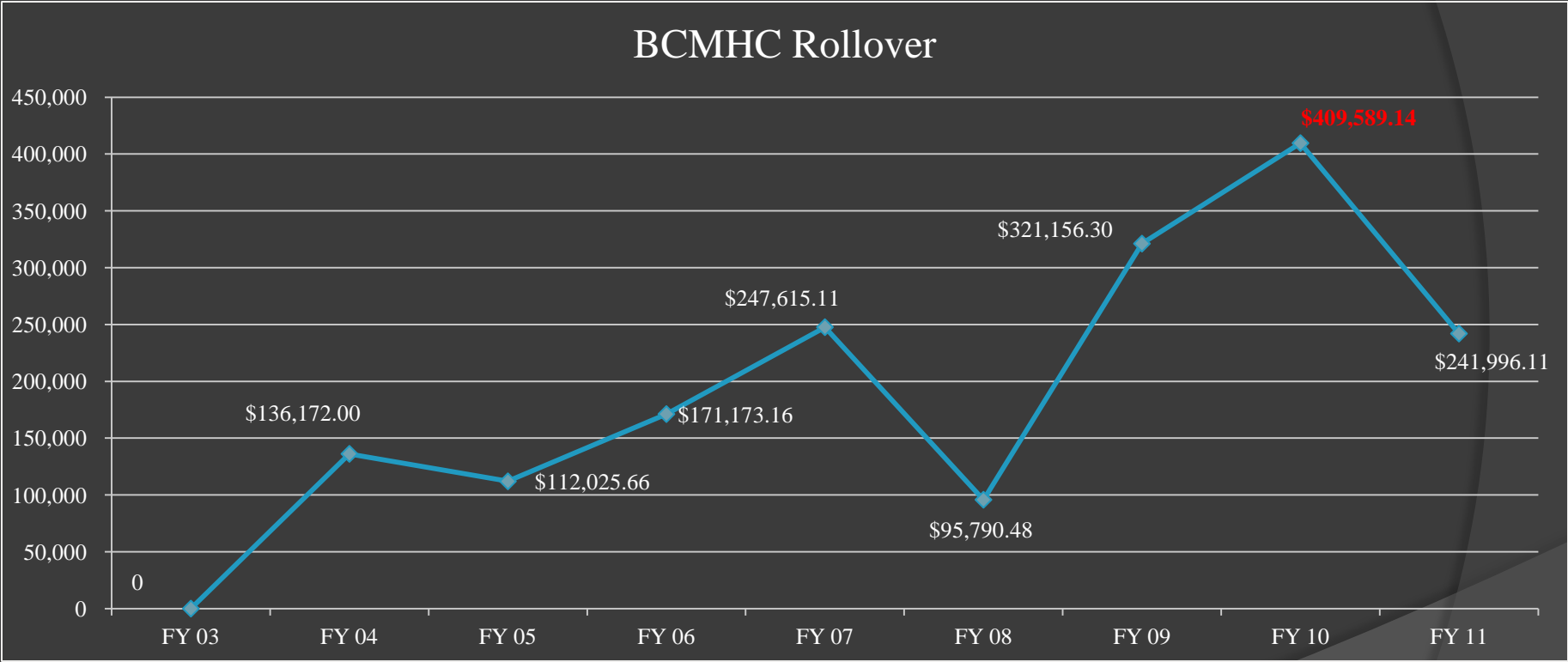
**Border Children's  
Mental Health Collaborative**



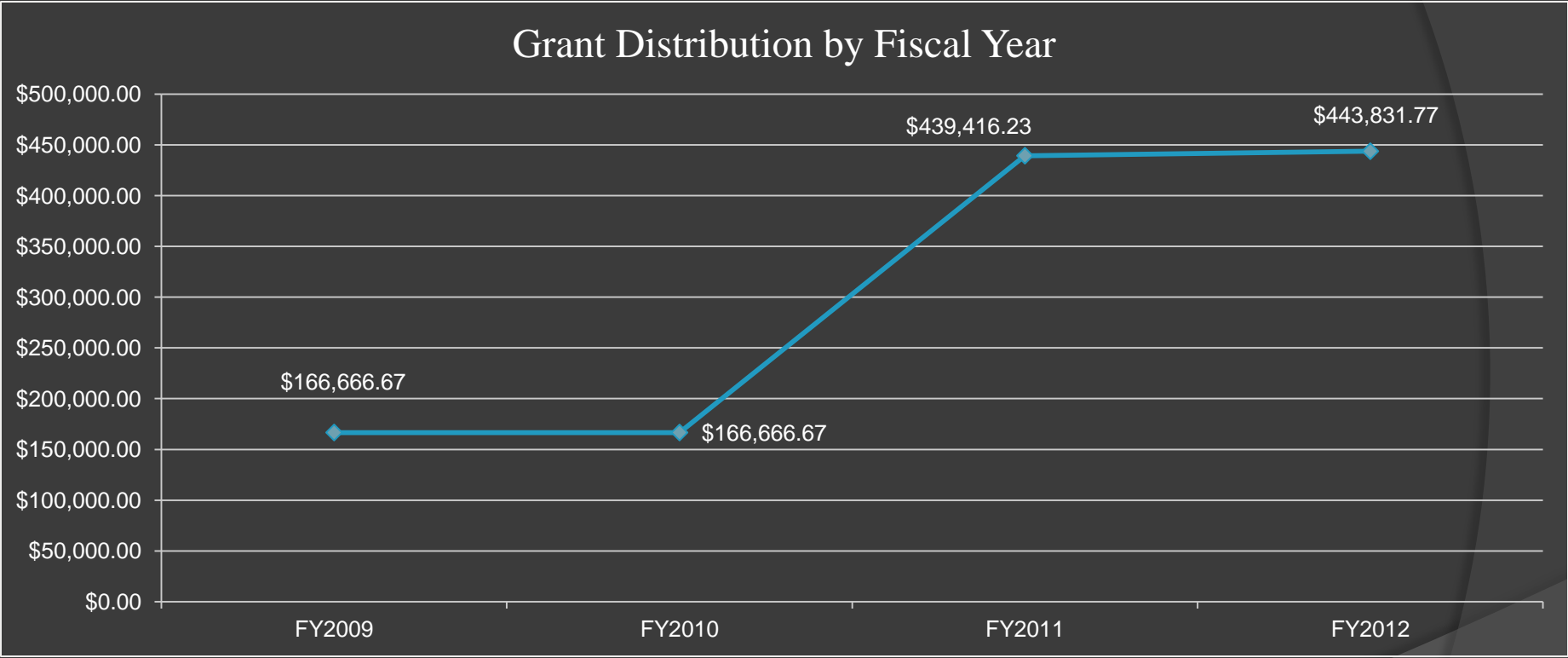
# Border Children's Mental Health Collaborative



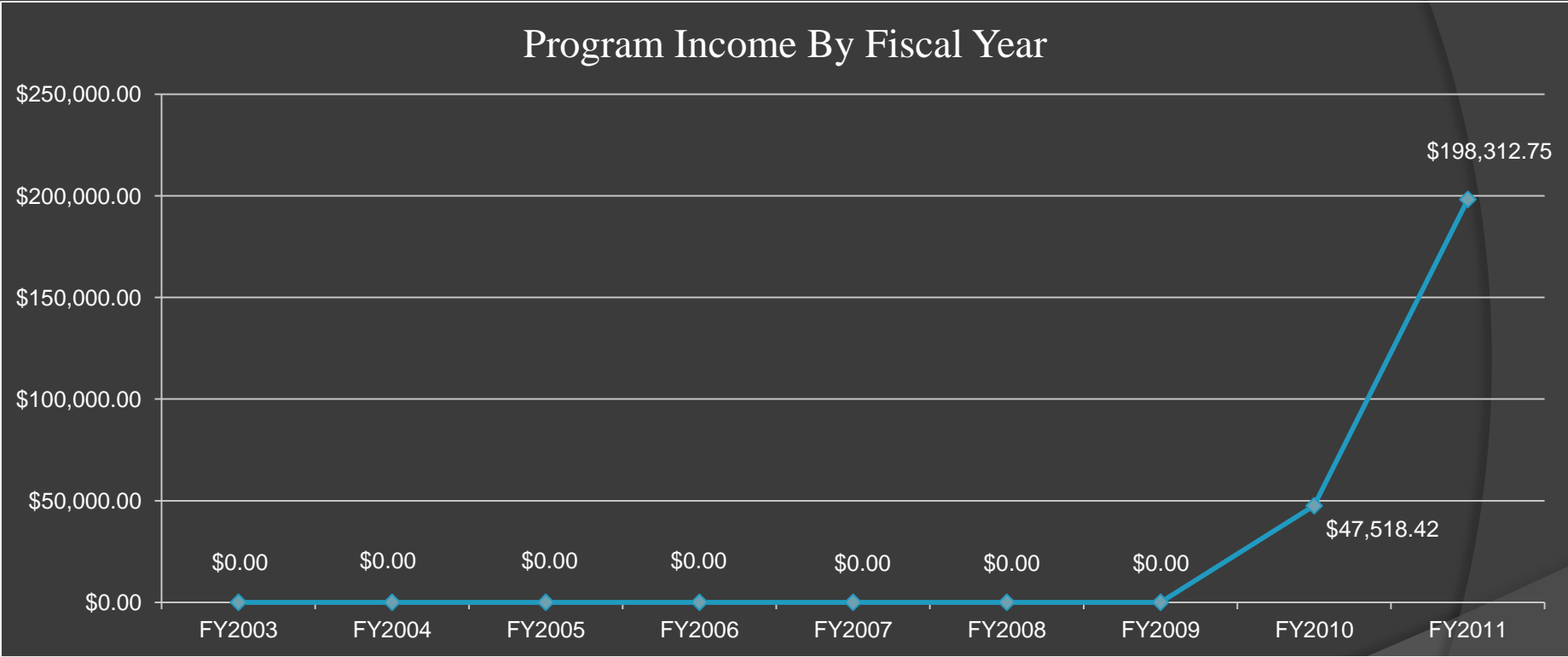
# Annual Fiscal Trends



# Annual Fiscal Trends



# Annual Fiscal Trends





# Border Children's Mental Health Collaborative

## Goals

- Sustainability
- Medicaid Reimbursement
- Increase Number of Grants Written and Obtained
- Increase Number of Contracts

# El Paso County Department of Mental Health Support Services

The department works with other entities to maximize resources in a cost effective manner, prevent duplication of efforts, and provide a continuum of care for those involved in multiple systems.

Commissioner  
Precinct 1

Commissioner  
Precinct 2

El Paso  
County  
Judge

Commissioner  
Precinct 3

Commissioner  
Precinct 4

El Paso County Department of Mental Health  
and Support Services

BCMHC  
Division

Contract  
Management  
Division

Grants  
Management  
Division

Special  
Projects  
Division

QUESTIONS?

# JUVENILE PROBATION DEPARTMENT

Health and Human Services Area

**DEPARTMENT OF FAMILY  
AND COMMUNITY  
SERVICES**

# Mission Statement

- To provide a safe and healthy quality of life that enables people to thrive and reach their potential through the efficient, effective use of County and community social services
- We meet our mission through direct services from the Galvan Law Library; Senior Nutrition Services; Child Welfare, General Assistance and Veterans Assistance; Rural Transit and Community Development
- We also meet our mission by working with numerous community based organizations

# General Assistance Services

- ⦿ This presentation focuses on our GA program
- ⦿ GA provides emergency assistance to individuals and families in El Paso County
- ⦿ We preserve housing through rental or mortgage assistance
- ⦿ We maintain habitability through utility assistance
- ⦿ We meet clothing needs for children entering foster care or who are in kinship care
- ⦿ We manage the disposition of remains when the next of kin lacks resources
- ⦿ We address other emergency needs on a case by case basis when no other resources are available

# Eligibility Profile

- ⦿ Our priority is assistance to households with small children or the elderly
- ⦿ We focus on those who experience a disruption to income or have unexpected demands on limited resources
- ⦿ Applicants document residency in El Paso County
- ⦿ Applicants document sources of income and/or assistance
- ⦿ Landlords document property ownership and rental arrearages

# FY 2011 Service Profile

- In FY 2011 we screened 4,751 applications for emergency assistance
- We assisted 1,641 households
- We provided kinship assistance to 18 families
- We authorized the burial of 3 adults
- We authorized the cremation of 97 adults
- We authorized 10 veteran burials and honored the request for one veteran cremation
- We made 352 referrals to other agencies
- We qualified 70 households for El Paso Electric's Low Income Rider Program

# Understanding the Need

- General Assistance functions as a homelessness prevention agency
- General Assistance is a member of the El Paso Coalition for the Homeless
- The County successfully managed two homelessness prevention projects with over \$3 million in funds over three years
- Federal policy is shifting resources to homelessness prevention and rapid re-housing
- In El Paso there are 522 emergency shelter beds; 222 transitional shelter beds and only 153 permanent supportive housing beds
- This shift in resources will have implications on how El Paso County addresses homelessness

# Leveraging Our Funding

- Our intent is to use our general revenue funding to leverage other resources
- We receive Emergency Food and Shelter Program Funding
- We are promoting our HPRP success in applying for other funding
- We applied for Homeless Housing Services Program funding from the state through the city
- We will apply for Emergency Solutions Grant (ESG) funding from both the city and state

# Funding Challenges

- Funding shifts at the federal and state level influence local planning processes
- Soliciting funds requires us to compete with other homeless serving organizations
- We prefer to leverage rather than expand our mission
- We coordinate with other organizations that provide emergency assistance
- This maximizes available resources

# Looking toward the Future

- GA fulfills the County's statutory obligation to meet the emergency needs of its indigent population
- Leveraging program resources allows GA to help keep families housed
- This approach helps contain the cost of public safety, health care and social service safety net systems
- GA embraces the Coalition for the Homeless vision of making El Paso a welcoming community with safe, accessible housing and services for all

Questions?



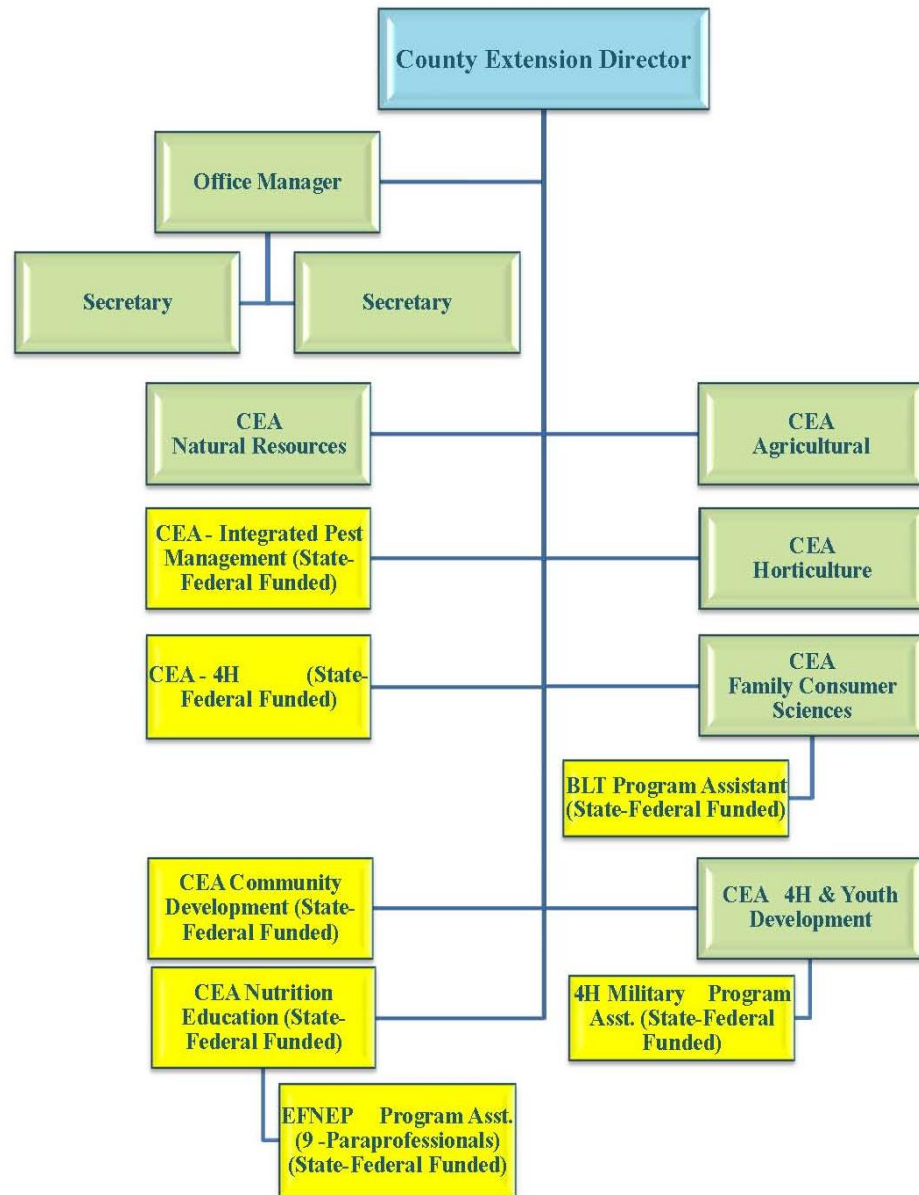
*Agri*LIFE **EXTENSION**

Texas A&M System

# *Texas AgriLife Extension*

## **Mission**

Improving the lives of people, businesses, and communities in El Paso County through high-quality and relevant outreach and continuing education programs.



# Core Service Areas

- Agriculture
- Family Consumer Sciences
- Nutrition
- 4H Youth Development
- Horticulture
- Natural Resources
- Integrated Pest Management
- Community Development

# Goals and Objectives

- **Goal: Nutrition Education: To improve the health and well being of limited resource families in El Paso County through educational programs related to nutrition, diet and health.**
- **Objectives: Target 40,000 educational contacts by providing nutrition education lesson series to 2,000 limited resource families or more and targeting an additional 5,000 limited resource youth or more in El Paso with nutrition education lesson series and summer camp programs.**

# Fiscal Year 2011 Accomplishments

<b>Department Activity</b>	<b>2009 Actuals</b>	<b>2010 Target</b>	<b>2010 Actuals</b>	<b>2011 Target</b>	<b>2011 Actuals</b>	<b>2012 Target</b>
<b>Outputs</b>						
<b>4-H Program or 4-H Club</b>						
Number of educational contacts	34,663	30,000	32,232	25,000	23,516	25,000
Number of youth participants in science based educational curriculum	21,458	18,000	21,595	15,000	16,721	18,000
Special Interest groups participants	3,318	3,000	4,512	3,000	4,286	3,000
Club Members	334	350	170	200	271	200
<b>Commercial Agriculture</b>						
Number of educational contacts	5,226	5,000	5,085	5,000	5,285	5,000
<b>Nutrition Education</b>						
Number of educational contacts	58,669	45,000	48,661	45,000	45,345	45,000
<b>Family &amp; Consumer Services</b>						
Number of educational contacts	11,002	12,000	12,655	12,000	12,207	14,000
<b>Natural Resources</b>						
Number of educational contacts	84,162	120,000	54,650	75,000	71,728	50,000
<b>Community Development</b>						
Number of educational contacts	3,912	4,000	7,915	4,000	4,314	4,000
<b>Integrated Pest Management</b>						
Number of educational contacts	10,298	10,000	11,806	10,000	11,953	10,000
<b>Horticulture</b>						
Number of educational contacts	16,347	22,000	17,272	15,000	17,509	20,000
Hours of volunteer community service	12,118	10,000	13,851	10,000	13,713	12,000
<b>Outcomes</b>						
<b>4H Program</b>						
% actual vs targeted educational contacts	116%	100%	107%	100%		
<b>Commercial Agriculture</b>						
% actual vs targeted educational contacts	105%	100%	102%	100%		

# Expanded Food Nutrition Program

- In 2011,
  - 1,283 families with 2,628 children enrolled in EFNEP.
  - 2,343 youth contacts were made through the EFNEP youth program.
  - 98% of families were at or below 100% of federal poverty level.
  - 41,229 nutrition education contacts in 2011



# ***COST – BENEFITS OF EFNEP***

- Studies have shown that for every \$1 spent of EFNEP, \$10 were estimated to be saved in health care costs and \$2 saved in food costs by participants.
- For El Paso County, this is \$4.5 million in estimated health care cost savings and almost \$893,810 in food costs.

# Better Living for Texans

- 2,283 participants in the series.
- Reported significant decrease in the amount of money spent on food.
  - *Eat Better to Live Better series:*
    - average savings in out-of-pocket expenses were \$29.26
  - *Back to Basics series:*
    - average savings in out-of-pocket expenses were \$28.13





Engage employees to participate in food nutrition education programs



*“Facts, information on how easy it is to count calories & eat right!”*

*“Gave [me] information that will be helpful towards healthy eating habits for me and my family*



## ◎ **Ascarate Community Garden**

- **Engaging youth in gardening activity as venue for nutrition and active life style**
- **Between July – Nov, 2011,**
  - 230 youth gardening visits to the Ascarate community garden by over 100 youth.

# VALUE

## Expanded Food and Nutrition Education Program



These nutrition programs teach low-income audiences to prepare nutritious meals, stretch their food resources, improve their food-safety practices, and participate in regular physical activity. This not only improves the quality of life and reduces the risk of chronic disease for participants, but lowers public health-care costs.

QUESTIONS ?

# OFFICE OF THE MEDICAL EXAMINER MONTHLY REPORT

December 15, 2011  
General Assistance/Probate Court

# Monthly Statistics

## November 3 to December 3

<b>Total ME Cases</b>	301	Deaths reported to the OME
<b>Exam Cases</b>	68	Actual cases transported to OME
<b>Release Cases</b>	236	Cases where primary physicians agree to sign the death certificates and no foul play is suspected
<b>Inquests</b>	25	Cases where primary physicians refuse to sign the death certificate
<b>Autopsies</b>	31	
<b>Externals</b>	34	
<b>Partial Autopsies</b>	3	
<b>Death Certificates</b>	93	
<b>Cremations</b>	192	

# General Assistance and Probate Court

# Criteria for Referral to General Assistance

## Initial Death Investigation

- Families who request assistance with funeral arrangements
- No known family
- Veterans with no family
- Unidentified

### Case work up/resources:

- Internet
- Local law enforcement agency assists with resources in attempt to locate Next of Kin
- Any other lead by means of property/documents, etc.

## Disposition

- All leads exhausted
- Law Enforcement Agency supplement
- Affidavit signed by the Medical Examiner
- When all attempts to locate Next of Kin have failed the case is then referred to General Assistance for Cremation/burial
  - Unidentified persons cannot be cremated

# Criteria for Referral to Probate Court

## Initial Death Investigation

- ⦿ Deaths where no Next of Kin is located
- ⦿ The decedent owned his home, vehicles, property
- ⦿ Bank information found at scene

### Case work up/resources:

- ⦿ Internet
- ⦿ Local law enforcement agency assists with resources in attempt to locate Next of Kin
- ⦿ Any other lead by means of property/documents, etc.

## Referred

- ⦿ All leads exhausted
- ⦿ Probate Court is contacted and case is referred
- ⦿ Probate assigns an attorney
- ⦿ Attorney makes necessary arrangements and takes care of the estate, etc.
- ⦿ Local funeral is contacted by attorney for cremation/burial

QUESTIONS?